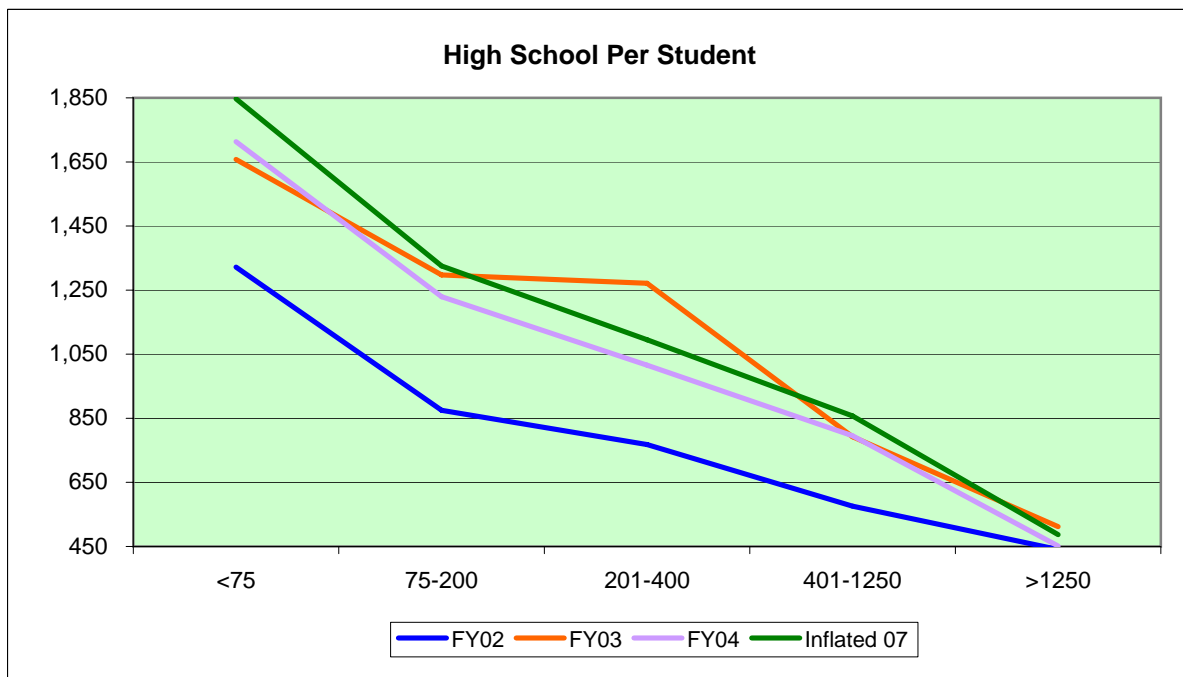
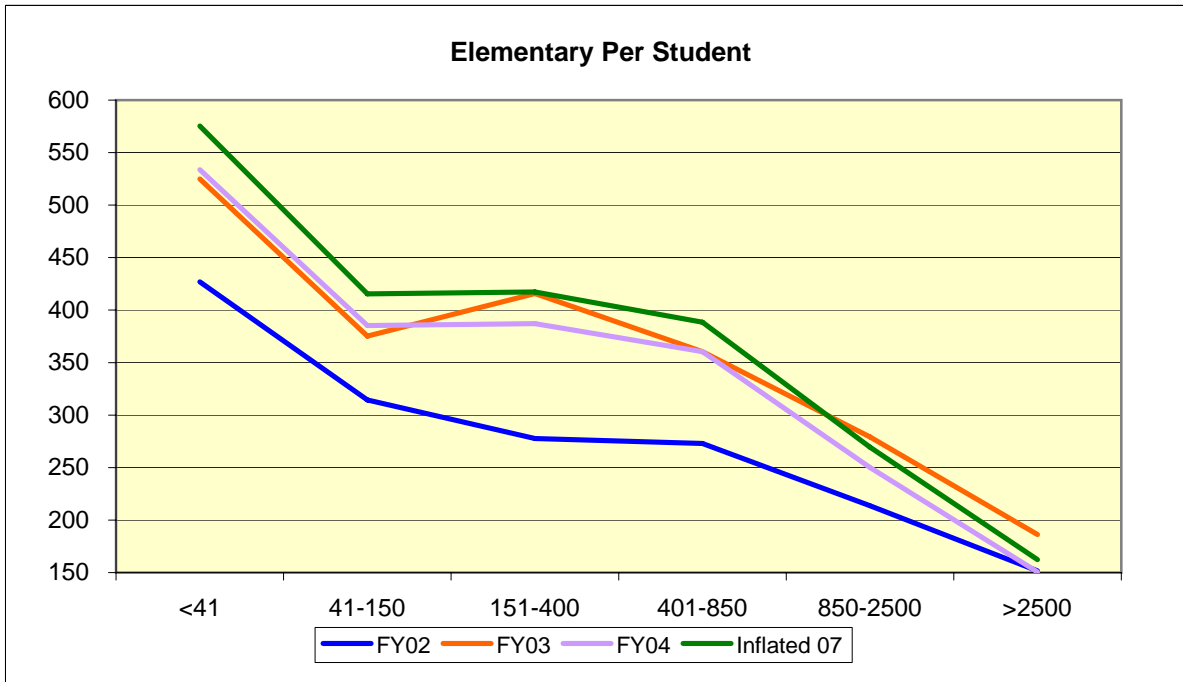


**Per Student Entitlement
3 years averages**

		FY02	FY03	FY04	Inflated 07
Elementary	<41	427	525	534	575
Elementary	41-150	315	375	385	415
Elementary	151-400	278	416	387	417
Elementary	401-850	273	360	360	388
Elementary	850-2500	214	279	250	270
Elementary	>2500	152	186	151	162
		FY02	FY03	FY04	Inflated 07
High School	<75	1,322	1,658	1,713	1,847
High School	75-200	875	1,297	1,229	1,325
High School	201-400	768	1,271	1,016	1,095
High School	401-1250	576	793	796	858
High School	>1250	440	512	452	487



**Per Student Entitlement
October 17, 2005**

		All Districts # of Students	EXTRACURRICULAR			Avg Supplies	Avg Total
			Avg Extra Travel	Avg Extra Scolastic	Avg Extra Athletic		
E6	<41	1,280	20	7	7	527	562
E5	41-150	6,148	16	17	67	296	396
E4	151-400	12,932	49	16	80	258	403
E3	401-850	10,495	17	15	65	275	372
E2	850-2500	20,394	5	5	52	194	257
E1	>2500	32,654	1	3	27	127	158
Elementary	Total	83,903	13	8	49	201	270
<hr/>							
H5	<75	1,371	141	252	736	681	1,810
H4	75-200	4,439	104	177	569	439	1,290
H3	201-400	4,911	78	141	460	394	1,073
H2	401-1250	8,905	73	87	374	301	835
H1	>1250	21,913	18	40	230	196	483
High School	Total	41,539	50	84	341	284	758

		No IA Districts # of Students	EXTRACURRICULAR			Avg Supplies	Avg Total
			Avg Extra Travel	Avg Extra Scolastic	Avg Extra Athletic		
		1,226	21	8	8	526	562
		5,639	9	15	58	305	387
		10,748	13	12	65	240	329
		9,219	12	16	61	235	325
		17,125	4	5	48	185	242
		32,654	1	3	27	127	158
		76,611	6	7	43	188	244
<hr/>							
		1,232	146	256	675	706	1,783
		3,681	80	179	527	398	1,185
		4,137	50	133	455	383	1,021
		7,880	67	87	331	301	786
		21,913	18	40	230	196	483
		38,843	41	80	317	272	710

Professional Judgment

		Student					
		Activities	Assessment	Security	Supplies	Equipment	Total
Elementary							
PJE4	<50	75	50	25	250	100	500
PJE3	50-150	50	50	25	250	100	475
PJE2	151-300	50	50	25	250	100	475
PJE1	>300	50	50	25	250	100	475

		Student					
		Activities	Assessment	Security	Supplies	Equipment	Total
Middle							
PJM4	<50	75	50	25	250	100	500
PJM3	50-100	275	50	25	350	150	850
PJM2	101-250	275	50	25	350	150	850
PJM1	>250	275	50	100	350	150	925

		Student					
		Activities	Assessment	Security	Supplies	Equipment	Total
High School							
PJH4	<50	700	80	50	400	300	1530
PJH3	50-150	700	80	50	400	300	1530
PJH2	150-400	700	80	50	400	300	1530
PJH1	>400	500	80	100	350	200	1230

**Per Student Entitlement
Options
October 17, 2005**

All amounts are millions of dollars. Each option is the change to FY04 Actual Inflated expenditures.

	Actual BASE	FY04 Actual Inflated	Option 1 (Supplies Only)	Option 2 (Extracurricular Only)	Option 3 (Average by size)	Option 4 (Average by level-E=\$300, HS=\$800)	Option 5 (Professional Judgment)
Extracurricular Travel	\$ 3.62	\$ 3.90					
Extracurricular not athletic	\$ 4.73	\$ 5.10					
Extracurricular athletic	\$ 20.42	\$ 22.02					
Option 2 - Extracurricular only at average by size				\$ (32.74)			
Texts & Supplies	\$ 30.84	\$ 33.25					
Option 1 - Supplies only at average by size			\$ (30.06)				
Option 3 - Paid inflated average by size					\$ 1.47		
Option 4 - Paid Elem at \$300 & HS at \$800 (average actual by level)						\$ 2.43	
Option 5 - Paid by level by size according to Professional Judgment							\$ 53.26
Totals	\$ 59.62	\$ 64.27	\$ (30.06)	\$ (32.74)	\$ 1.47	\$ 2.43	\$ 53.26