

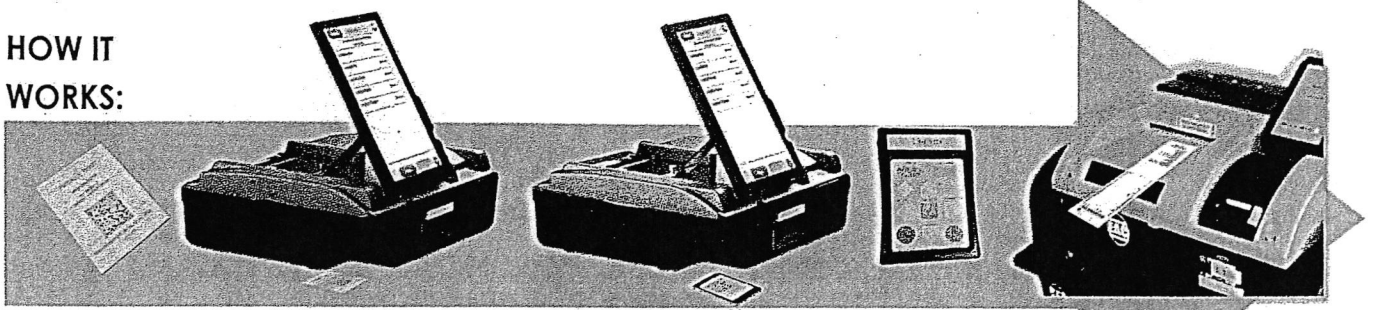
- ◆ Freedom to vote via touch
- ◆ Freedom to use as Ballot Marking Device
- ◆ Freedom to incorporate ballot populated in advance from smart phone or tablet device
- ◆ Freedom to interface with industry known poll books
- ◆ Freedom to use as ADA Compliant Device
- ◆ Freedom for disabled voter to vote "using the same methodology and equipment" as sighted voter
- ◆ Freedom to use Screen Reader mode for disabled voters
- ◆ Freedom to use as an Early Voting, Election Day Vote Center and Walk-in Absentee solution
- ◆ Freedom to set on table or in custom, privacy voting booth

OpenElect FreedomVote (FVT) provides voters the option to initialize their ballot by scanning the bar code created by a poll book, navigate through the ballot like a touchscreen, use a custom designed braille encoded keypad or populate your ballot by scanning a bar code from your personal electronic device.

FreedomVote accommodates voters in Early Voting, an Election Day Vote Center and multiple precinct voting locations. FreedomVote is fully HAVA compliant and produces a printed ballot which may be reviewed by the voter prior to being scanned via secure tabulation using the OpenElect® Voting Optical Scan (OVO®) or the OpenElect Voting Central Tabulation System (OVCS).



HOW IT WORKS:



Voter checks-in and receives a barcode from pollbook to initialize their ballot

Vote via personal electronic device, touchscreen or keypad

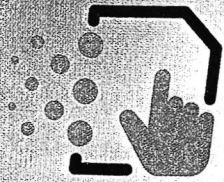
Voter receives a printed ballot to insert into an OVO to cast the vote

GENERAL USABILITY ELECTION
DEMO PRECINCT ONE
UVS120014: TRAINING - 1 OF 1

FOR U.S. SENATE
5 **ALEX
FOR STATE REPRESENTATIVE
7 NATALIE JONES
8 ELENA VLASLOV
FOR DOG CATCHER
NO SELECTION
JOEL GOODSEN
NO SELECTION
CHARLIE BABBITT
NO SELECTION
PROPOSED CONSTITUTIONAL AMENDMENT H
NO SELECTION



UNIVERSAL VOTING SYSTEM



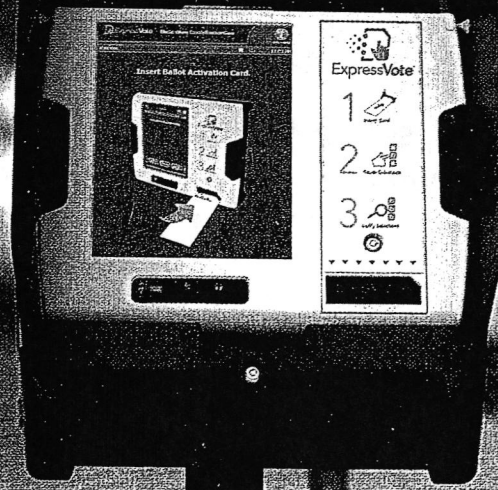
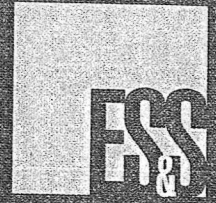
ExpressVote®

THE ES&S EXPRESSVOTE HANDLES IT ALL.

The ExpressVote Universal Voting System utilizes touch-screen technology and produces a paper-based record for tabulation.

As a marker, the ExpressVote handles the entire marking process, eliminating marginal marks and the need for voter mark interpretation. Activation cards communicate the correct ballot style to present on the touch screen for each voter. Voters utilize the touch screen to mark their vote selections, receiving a verifiable paper vote record upon completion.

Used in early vote centers and on Election Day in precincts or vote centers, the ExpressVote can serve every eligible voter, including those with special needs. As a fully compliant ADA (Americans with Disabilities Act) voting solution, ExpressVote enables each voter to mark selections independently.



Choose Leading-edge Technology

KEY FEATURES

ACTIVATING THE VOTE SESSION

The voter receives an activation card to begin the process. Election officials can choose from three options:

- If only one ballot style is programmed for the election, a blank card activates the vote session.
- If the election has multiple ballot styles, a blank card requires a poll worker to select the correct ballot style for the voter.
- If the election has multiple ballot styles, a card with an activation barcode displays the correct options for the voter.

CASTING OPTIONS

The ExpressVote enables casting options. Voters can:

- Manually place vote summary card in the DS200® for scanning and tabulation.
- Use AutoCast® to place vote summary card into a secure container for later tabulation by an election official, who may use the DS450® or DS850® central scanner and vote tabulator.

VERIFIABLE PAPER RECORD

As a marker, the ExpressVote prints the voter's selections on the activation card in human-readable text and in barcode format. Once completed, a vote summary card is returned which can be verified for accuracy, then tabulated using a DS200, DS450 or DS850.

EASY TO SET UP AND USE

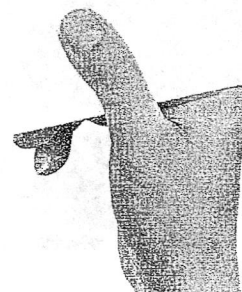
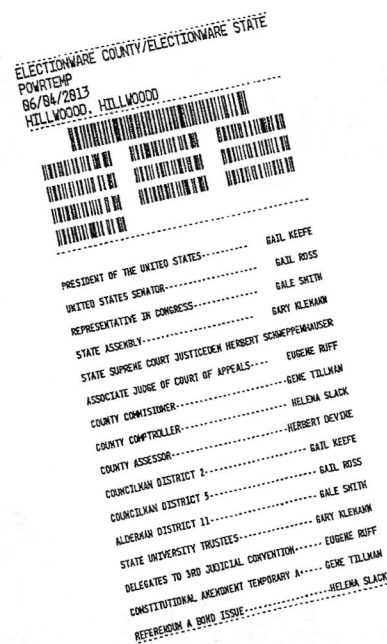
The one-step startup and poll-closing procedure make the ExpressVote an ideal device for poll workers. The intuitive design offers streamlined simplicity for all voters, poll workers and election staff. The paper activation card is the vote session activator – there is no expensive technology to manage or program. The ExpressVote is small, lightweight and easy to carry.

CONTROLLED AND REDUCED COSTS

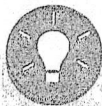
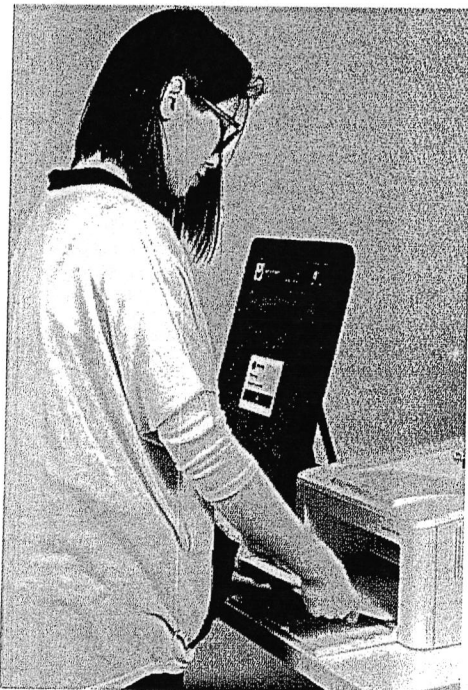
Traditional ballot printing costs can be reduced significantly by eliminating the need for pre-printed paper ballots. With low operation and maintenance fees, budgeting for recurring expenses with the ExpressVote is easy. The system does not use ink, toner or paper rolls and consumes 70 percent less paper than traditional ballots.

INNOVATIVE DESIGN

Complete and total independence is maintained while voters cast their own records. Voters review a summary page and can make changes before casting ballots. A voter's selection changes will not spoil the voting session. The system produces a verifiable paper record for each voter that is digitally scanned for tabulation. ExpressVote in marking mode neither stores nor tabulates vote counts. The system is secure – the election definition media device is protected in a locked environment.

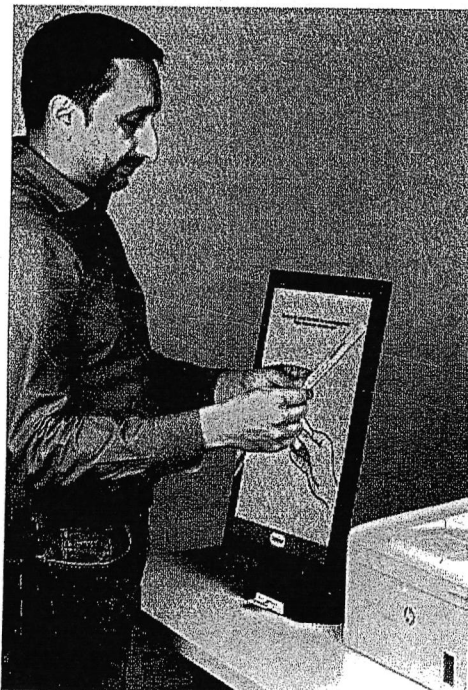


FEATURES & BENEFITS



SIMPLE

Familiar printing technology for both poll workers and voters. Simple process for poll worker to reload paper.



EFFICIENT

BMD printer uses standard 8.5" x 11" non-proprietary paper. Unused paper can be saved for later election events.



FLEXIBLE

Paper ballots can be scanned on any ImageCast® tabulator in the voting location or central office.

Get in touch

1.866.654.VOTE (8683)
sales@dominionvoting.com
www.dominionvoting.com

DOMINION
 VOTING



OFFICIAL BALLOT
General Election
Western States Test
Tuesday, November 8, 2016

1005

1005 PP



Governor
Vote for Amelia Earhart, Pilot

Supervisor, District 1
Vote for Vincent Price, Actor / Writer /
Gourmet

Mayor
BLANK CONTEST

County Unified Gov Brd Mem
BLANK CONTEST

Measure Z
BLANK CONTEST



Verity Scan

Digital Ballot Scanning



exceptionally easy and accurate scanned vote capture

Designed for: Early Voting | Election Day | Vote Centers



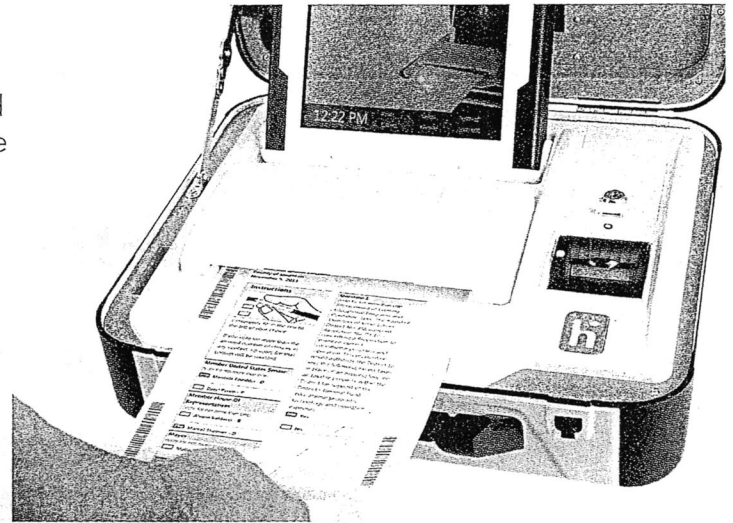
Voters

Quick ballot scanning

Patented, animated arrows show the voter exactly when and where to insert the ballot. There's no wrong way to insert the ballot lengthwise, and Verity Scan reads both sides of the ballot in seconds.

Easy second-chance voting

Easy-to-understand, plain language notices alert voters to possible errors, giving them a second chance to make any corrections.



Election Managers

Ensures reliable audits of voter intent and enables fast recounts

You can configure Verity Scan to digitally capture full images of scanned ballots.

Securely stores voting data

Secure, redundant, physically separate storage locations for ballot images, case vote records and audit logs assure officials that voting data is safe.

Provides polling place reports

Built-in thermal printer can print ballot count totals or results at the polling place after polls close.

Enables immediate resolution of write-ins at the polling place

Can print write-in images for on-the-spot write-in resolution.

