

**Environmental Quality Council Report  
HB2 FWP Hunting Access Program FY16/17 Budget Restrictions**



**Alan Charles, FWP Landowner/Sportsman Relations Bureau Chief  
May 4, 2016**

**BACKGROUND:** The 2015 Legislature placed the following restrictions for FY16&17 in House Bill 2 on the Fish, Wildlife, & Parks Hunting Access Program budget:

- Hunting Access Program Administration (Restricted/OTO): \$1,019,172 (FY16)  
\$1,019,172 (FY17)
- Hunting Access Program Landowner Contracts (Restricted): \$5,775,364 (FY16)  
\$5,775,364 (FY17)
- Hunting Access Program Landowner Contracts may be used either for hunter access program payments to landowners or field services provided to manage hunting on block management areas. **The department will report on Hunting Access Program Landowner Contracts to the environmental quality council in terms of acres, costs, and services provided to manage hunting on block management areas 90 days after big game hunting season ends.**

**FWP RESPONSE:** For the purposes of setting up program budgets, providing direction to program staff regarding how to charge program expenditures, and providing a basis for preparing the post-season program report for EQC, the following definitions were developed:

FWP defines “**Hunting Access Program Administration**” as:

*Operations costs and personal services costs for time spent by program staff to prepare and manage program budgets, prepare and process contracts and BMA maps, prepare, print and mail program materials, issue payments and cooperator licenses, prepare program reports, and attend program planning meetings.”*

FWP defines “**Hunting Access Program Landowner Contract Payments**” and “**Field Services Provided to Manage Hunting on Block Management Areas**” as:

*Hunter Access Program Payments to Landowners – direct payments to landowners;*

*Field Services Provided to Manage Hunting on Block Management Areas - operations costs and personal services costs for time spent by program staff to set up and manage Block Management Areas, including activities such as meeting with landowners to evaluate properties and establish BMA rules, installing BMA sign-in boxes and boundary signs, providing BMA patrol presence, issuing BMA permission either on-site or from remote locations, distributing and collecting permission slips and dismantling BMAs after the hunting season ends.*

## 2015 BLOCK MANAGEMENT PROGRAM

**TOTAL CONTRACTS:** **1,280**

**TOTAL CONTRACT PAYMENTS:** **\$4,446,103**

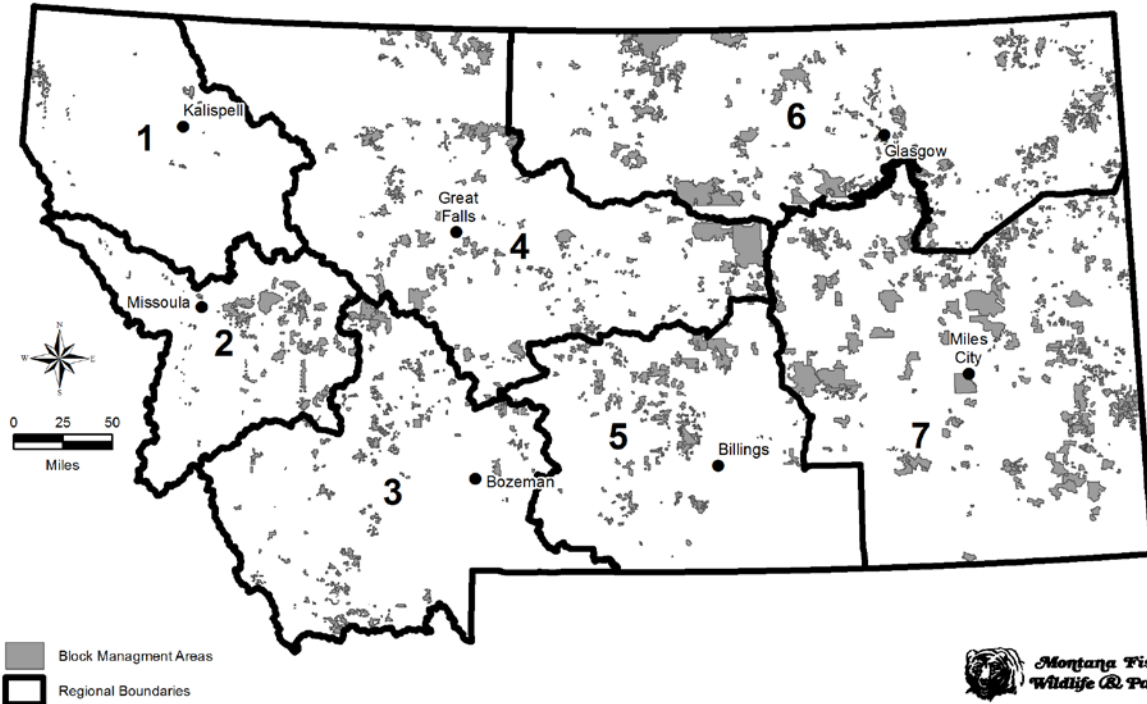
**TOTAL ENROLLED ACRES:** **7,376,508**

Region	Contracts	Payments	Acres
1	15	\$24,869	765,348
2	145	\$470,654	583,787
3	102	\$639,389	531,746
4	222	\$847,782	1,230,171
5	151	\$469,187	624,950
6	320	\$946,370	1,264,944
7	325	\$1,067,853	2,375,562

### SERVICES PROVIDED TO MANAGE HUNTING ON BMAS:

- 44 hunting access technicians (HATs) statewide – hired as seasonal staff;
- HATs assigned to patrol areas ranging from 325 square miles to 9,476 square miles;
- HATs provided direct services in assigned areas to number of BMAs ranging from 6 – 86, with number of landowners in each BMA ranging from one to more than 30;
- HATs travelled combined total mileage for peak months of October & November ranging from 2300+ miles to more than 12,000 miles;

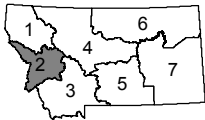
### Montana Fish, Wildlife & Parks Block Management Areas



# Hunting Access Technician Districts 2015 - Region 2



Montana FWP Regions

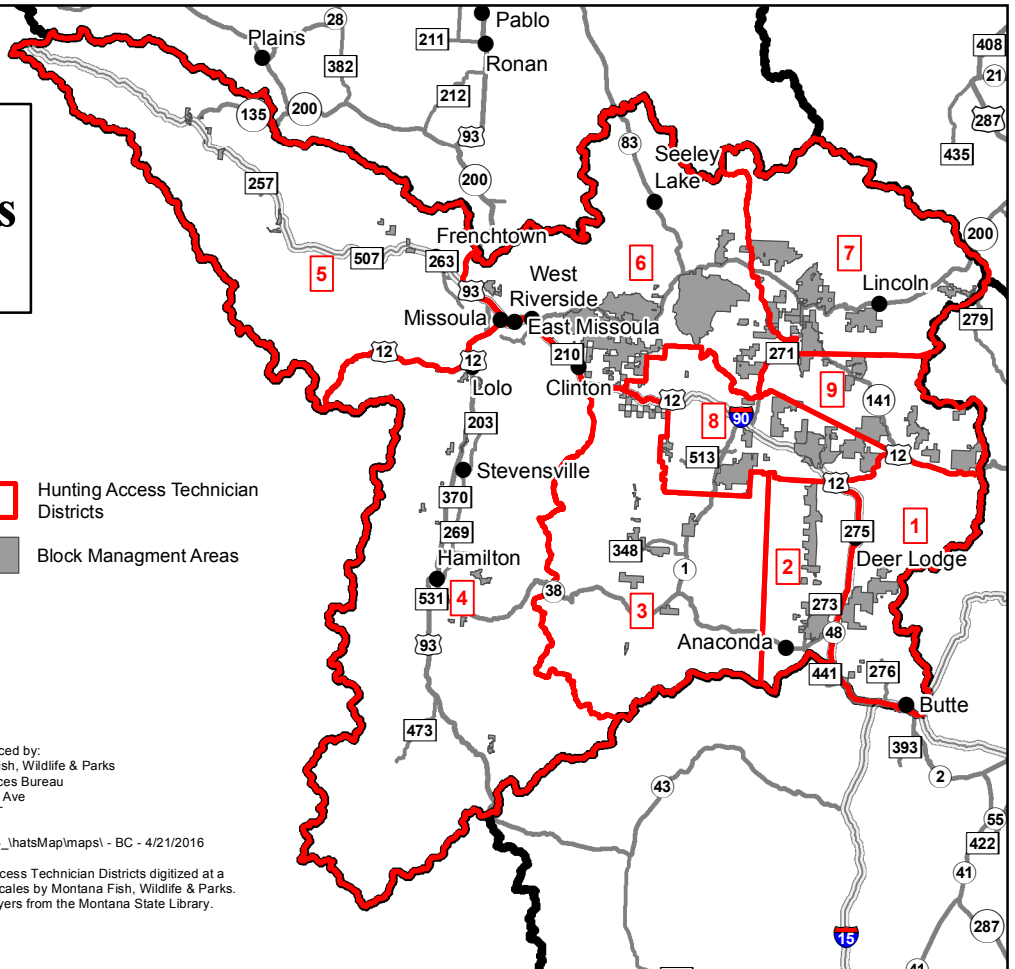


- Hunting Access Technician Districts
- Block Management Areas

Map produced by:  
Montana Fish, Wildlife & Parks  
Data Services Bureau  
1420 E 6th Ave  
Helena, MT

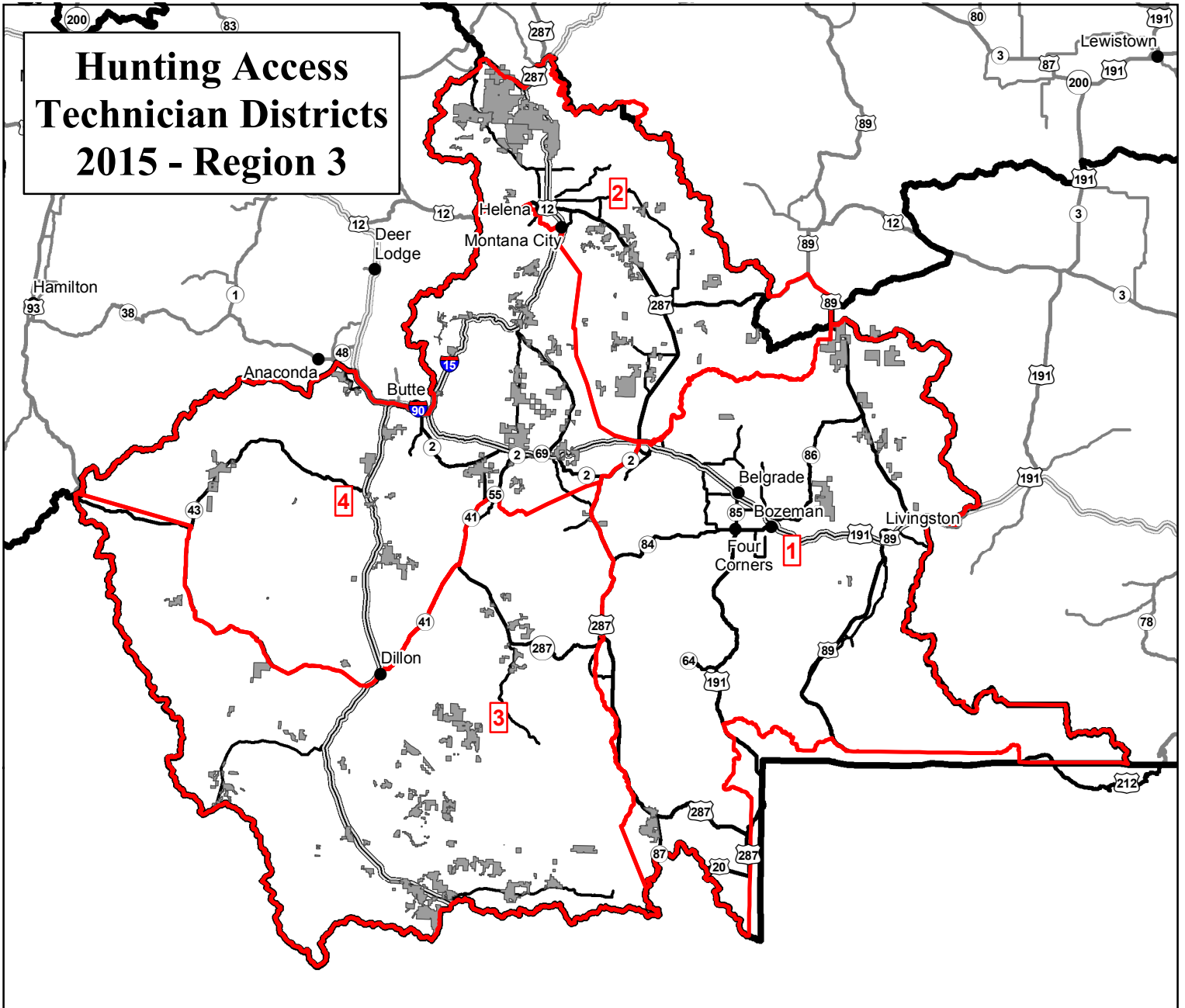
Projects\33\_vhatsMap\maps\ - BC - 4/21/2016

Hunting Access Technician Districts digitized at a variety of scales by Montana Fish, Wildlife & Parks. All other layers from the Montana State Library.

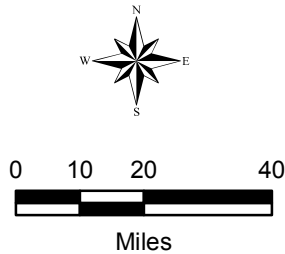


District	Name of HAT Assignment Area	Area Square Miles	Number of BMAs in Assigned Area	HAT Mileage (October & November 2015)	Other Information
1	East Deer Lodge	580	3	3,662	The East Deer Lodge Hunting Access Technician is based in Deer Lodge and patrols the Deer Lodge, Anaconda, and Garrison areas. In 2015 this position accounted for <b>5,378 hunter days</b> , field checked <b>32 harvested big game animals</b> and maintained routine contact with 10 cooperators and multiple other landowners in the area. (General Rifle Season Position)
2	West Deer Lodge	416	3	5,749	The West Deer Lodge Hunting Access Technician is based in Garrison and patrols the Deer Lodge, Anaconda, Garrison and Drummond area. In 2015 this position accounted for <b>2,847 hunter days</b> , field checked <b>12 harvested big game animals</b> and maintained routine contact with 4 cooperators, Montana Correctional Enterprises Ranch personnel and multiple other landowners in the area. (General Rifle Season Position)
3	Granite County	1,398	6	5,101	The Granite County Hunting Access Technician is based in Garrison and patrols the Philipsburg, Georgetown Lake, Drummond and Garrison areas. In 2015 this position accounted for <b>1,668 hunter days</b> , field checked <b>16 harvested big game animals</b> and maintained routine contact with 10 cooperators and multiple other landowners in the area. (General Rifle Season Position)
4	Ravalli County	2,885	12	3,646	This area patrolled by two people and includes the Upper and Lower Bitterroot valley. In 2015 this district accounted for <b>3,224 hunter days</b> , maintained routine contact with 14 cooperators and multiple other landowners in the area.
5	Mineral County	1,962	7	2,951	This HAT patrols the St. Regis, Superior, Alberton and Frenchtown areas. In 2015 this position accounted for <b>2,692 hunter days</b> , field checked <b>3 harvested big game animals</b> and maintained routine contact with 10 cooperators and multiple other landowners.
6	Upper Blackfoot	1,342	9	3,719	This HAT patrols the Ovando, Lincoln, and Helmsville areas. In 2015 this position accounted for <b>2,334 hunter days</b> , field checked <b>24 harvested big game animals</b> and maintained routine contact with 26 cooperators and multiple other landowners. The Upper and Lower Blackfoot HATs administer the public Shanley Drawing every Friday night during the General Rifle Season.
7	Lower Blackfoot	985	6	2,331	This HAT patrols the Potomac, Greenbush, Clearwater Junction and Ovando areas. In 2015 this position accounted for <b>4,442 hunter days</b> , field checked <b>13 harvested big game animals</b> and maintained routine contact with 26 cooperators and multiple other landowners, and also helps administer the public Drawing for Shanley and Dick Creek BMAs (see above).
8	Garrison/Drummond	559	9	Mileage included throughout multiple districts.	This district is patrolled by several HATs and program staff as additional and shared responsibilities. Patrol area includes Hall, Drummond, Garrison and Little Blackfoot areas. In 2015 this area accounted for <b>5,576 hunter days</b> and field checked <b>59 harvested big game animals</b> and maintained routine contact with 25 cooperators and multiple other landowners in the area.
9	Avon/Helmville	424	7	4,921	This HAT patrols the Avon, Helmsville, McDonald Pass, Drummond and Garrison areas. In 2015 this position accounted for <b>4,654 hunter days</b> , field checked <b>13 harvested big game animals</b> and maintained contact with 15 cooperators and multiple other landowners.

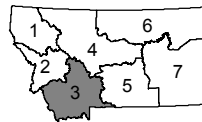
# Hunting Access Technician Districts 2015 - Region 3



- Hunting Access Technician Districts
- Block Management Areas



Montana FWP Regions



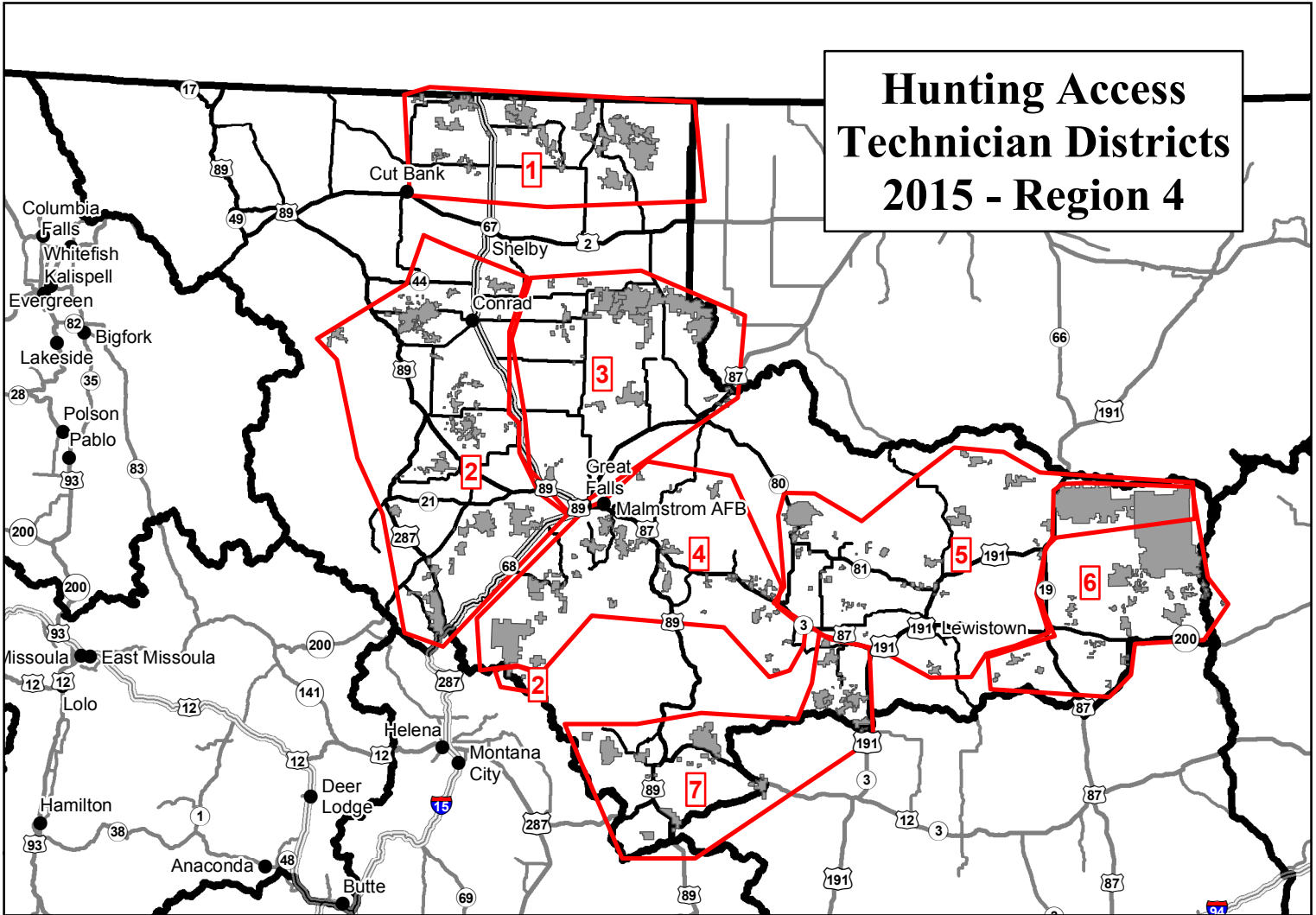
Map produced by:  
Montana Fish, Wildlife & Parks  
Data Services Bureau  
1420 E 6th Ave  
Helena, MT

Projects\33\_hatsMap\maps\ - BC - 4/21/2016

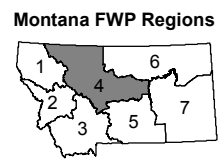
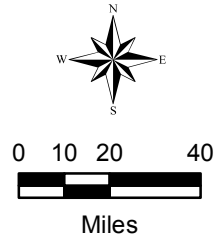
Hunting Access Technician Districts digitized at a variety of scales by Montana Fish, Wildlife & Parks. All other layers from the Montana State Library.

District	Name of HAT Assignment Area	Area Square Miles	Number of BMAs in Assigned Area	HAT Mileage for Oct & Nov 2015	Other Information
1	Bozeman	5,913	15	11,496	Covered BMA's in Shields River, Paradise and Madison Valleys. This accounts for 15 BMA's and 19 landowners and 29 sign in boxes
2	Townsend	2,701	26	8,980	Covered Townsend and Helena Area BMA's and responsible for 26 BMA's with 32 landowners and 45 sign in boxes
3	Dillon	5,892	19	5,868	Covered Sweetwater, Blacktail, Centennial and Bighole BMA's and responsible for 19 BMA's with 19 landowners and 31 sign in boxes.
4	Whitehall	4,692	25	10,578	Covered Helena and Boulder Area BMA's and responsible for 25 BMA's with 31 landowners and 48 sign in boxes

# Hunting Access Technician Districts 2015 - Region 4



Hunting Access Technician Districts  
 Block Management Areas



Map produced by:  
 Montana Fish, Wildlife & Parks  
 Data Services Bureau  
 1420 E 6th Ave  
 Helena, MT

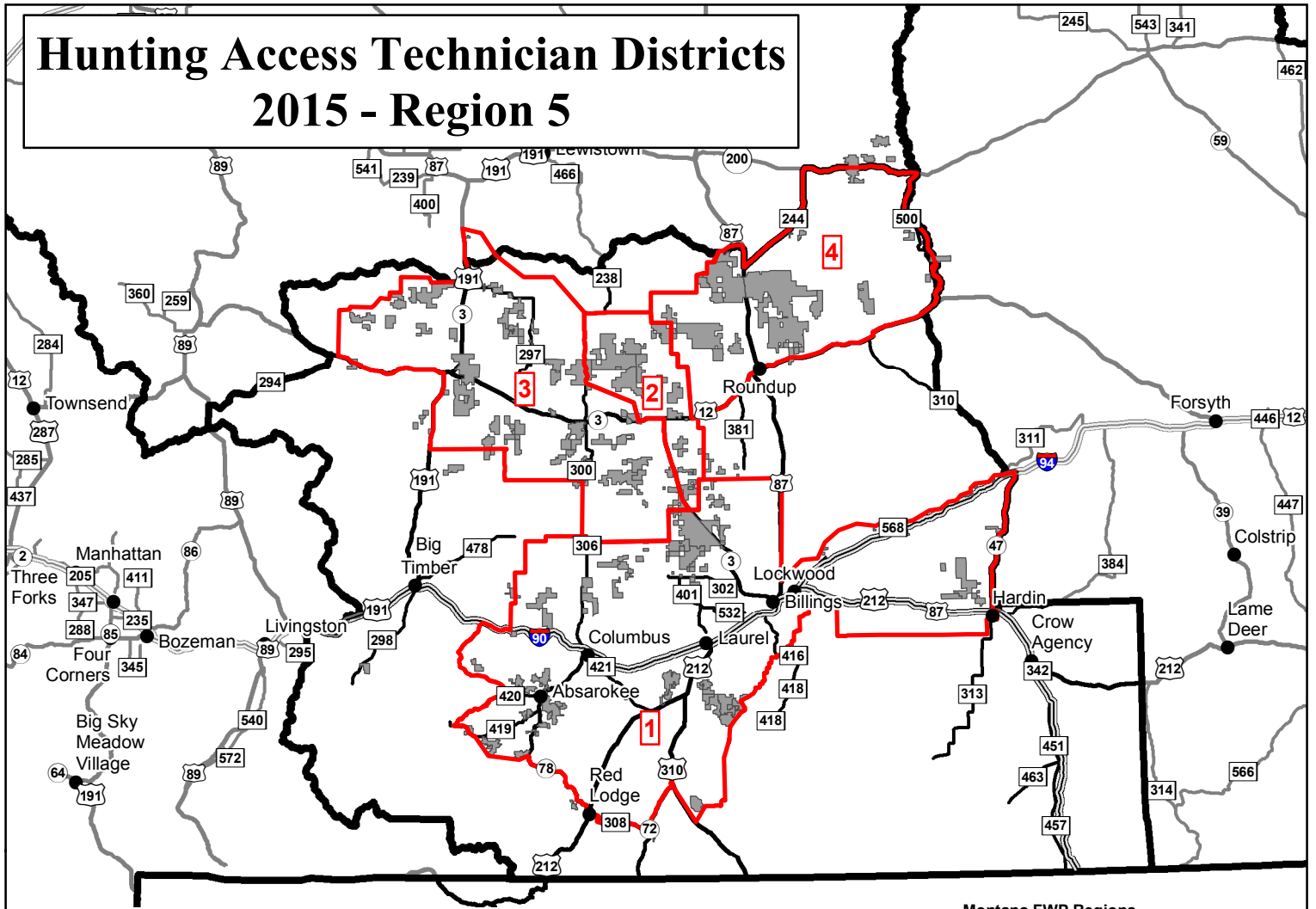
Projects\33\_hatsMap\maps1 - BC - 4/21/2016

Hunting Access Technician Districts digitized at a variety of scales by Montana Fish, Wildlife & Parks. All other layers from the Montana State Library.

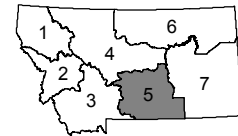




District	Name of HAT Assignment Area	Area Square Miles	Number of BMAs in Assigned Area	HAT Mileage for Oct & Nov 2015	Other Information
1	Highline	2,059	20	10,834	covered 34 landowners Occasionally swung south to Tiber to help Dalton as needed.
2	The Front to Helena	3,667	37	9,996	covered 54 landowners
3	North GF	2,148	17	6,680	covered 30 landowners
4	South & East GF	3,409	25	3,402	covered 33 landowners
5	Fergus County	2,056	26	8,966	covered 27 landowners covers 35 landowners
6	Petroleum Cnty	2,525	27	2,496	Has been involved in several search & rescues annually Has also provided emergency first aid to severe wounds and burns to area hunters...
7	WSS area & east	2,547	15	2,488*	Covered 20 landowners * = Nov Aaron went through several veh's due to mechanical failures - November mileage uncertain.

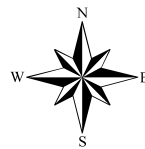
# Hunting Access Technician Districts 2015 - Region 5



Montana FWP Regions



 Hunting Access Technician Districts  
 Block Management Areas

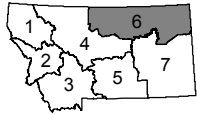


Map produced by:  
 Montana Fish, Wildlife & Parks  
 Data Services Bureau  
 1420 E 6th Ave  
 Helena, MT

Projects\33\_hatsMap\maps1 - BC - 4/21/2016

Hunting Access Technician Districts digitized at a variety of scales by Montana Fish, Wildlife & Parks. All other layers from the Montana State Library.

District	Name of HAT Assignment Area	Area Square Miles	Number of BMAs in Assigned Area	HAT Mileage for Oct & Nov 2015	Other Information
1	Columbus	3,740	50	6,345	13 roster boxes. Responsible for 9 BMAs (10 unique landowners). 122 hunter contacts and 55 landowner contacts 8/24-11/29.
2	Currant Cr.	435	9	3,948	4 roster boxes. Writes permission slips on-site Fri-Sun 0600-0830 during antelope rifle season. Only responsible for Currant Cr. BMA (5 landowners) and is done at end of antelope season.
3	Harlowton	1,847	42	7,135	10 roster boxes. Responsible for 8 BMAs and 1 Access Corridor (11 unique landowners).
4	Roundup	1,431	17	6,709	16 roster boxes. Responsible for 7 BMAs (13 unique landowners).



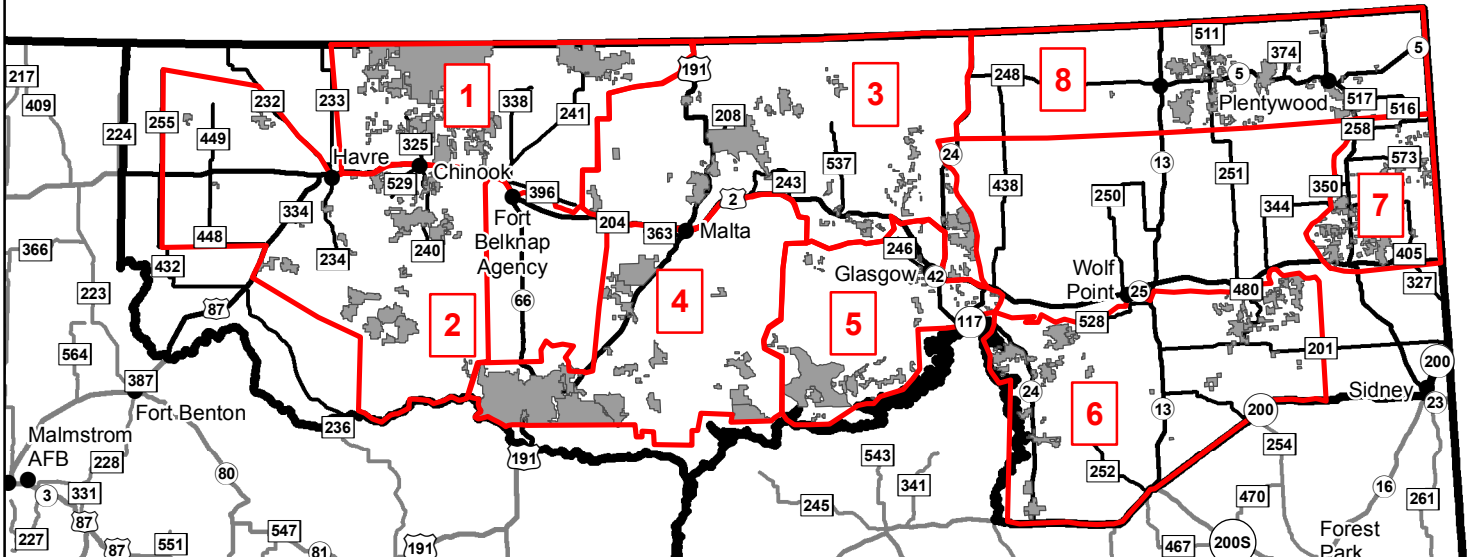
# Hunting Access Technician Districts 2015 - Region 6



0 10 20 40



Miles



- Hunting Access Technician Districts
- Block Management Areas



Map produced by:  
Montana Fish, Wildlife & Parks  
Data Services Bureau  
1420 E 6th Ave  
Helena, MT

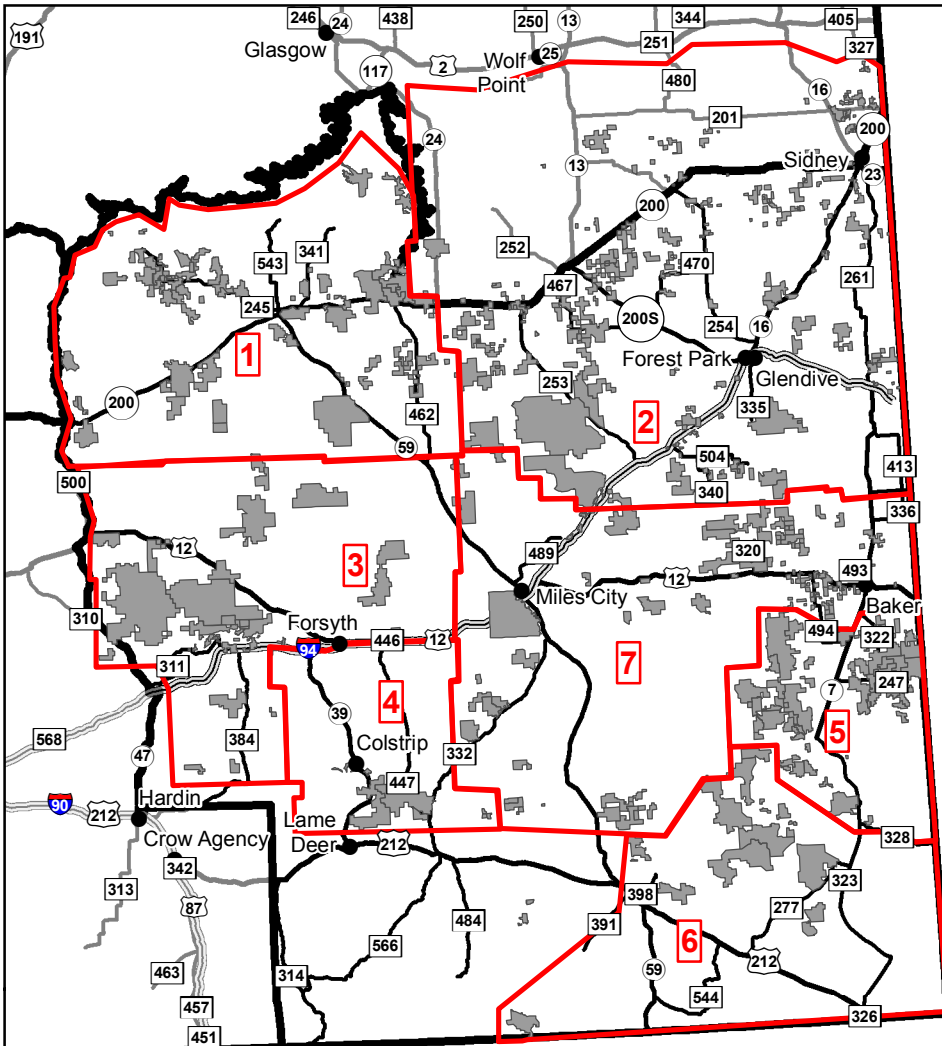
Projects\33\_hatsMap\maps\ - BC - 4/21/2016

Hunting Access Technician Districts digitized at a variety of scales by Montana Fish, Wildlife & Parks. All other layers from the Montana State Library.

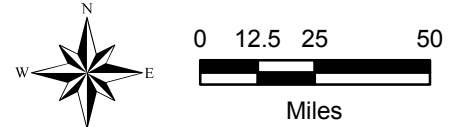
District	Name of HAT Assignment Area	Area Square Miles	Number of BMAs in Assigned Area	HAT Mileage for Oct & Nov 2015	Other Information
1	North Havre	2,174	23	7,024	1 HAT, 21 Type 1 BMA's, services (37 sign-in boxes), patrols and signs entire district and responds to any issues or complaints on both Type 1 and Type 2 BMA's. This HAT also helps cover the South Havre district.
2	South Havre	3,470	25	6,983	1 HAT, 14 Type 1 BMA's, services (27 sign-in boxes), patrols and signs entire district and responds to any issues or complaints on both Type 1 and Type 2 BMA's
3	North Valley/Phillips	3,595	26	6,560	1 HAT, 24 Type 1 BMA's, services (66 sign-in boxes), patrols and signs entire district and responds to any issues or complaints on both Type 1 and Type 2 BMA's
4	South Phillips	2,580	16	7,161	1 HAT, 14 Type 1 BMA's, services (38 sign-in boxes), patrols and signs entire district and responds to any issues or complaints on both Type 1 and Type 2 BMA's
5	South Valley	1,556	25	7,476	1 HAT, 21 Type 1 BMA's, services (50 sign-in boxes), patrols and signs entire district and responds to any issues or complaints on both Type 1 and Type 2 BMA's
6	McCone/Richland	3,062	26	10,089	1 HAT, 25 Type 1 BMA's, services (46 sign-in boxes), patrols and signs entire district and responds to any issues or complaints on both Type 1 and Type 2 BMA's
7	Culbertson	880	20	8,567	1 HAT, 20 Type 1 BMA's, services (65 sign-in boxes), patrols and signs entire district and responds to any issues or complaints on all Type 1 BMA's
8	Plentywood	2,728	16	9,221	1 HAT, 14 Type 1 BMA's, services (46 sign-in boxes), patrols and signs entire district and responds to any issues or complaints on both Type 1 and Type 2 BMA's



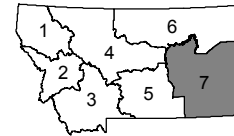
# Hunting Access Technician Districts 2015 - Region 7



- Hunting Access Technician Districts
- Block Management Areas



Montana FWP Regions



Map produced by:  
Montana Fish, Wildlife & Parks  
Data Services Bureau  
1420 E 6th Ave  
Helena, MT



Projects\33\_hatsMap\maps\ - BC - 4/21/2016

Hunting Access Technician Districts digitized at a variety of scales by Montana Fish, Wildlife & Parks. All other layers from the Montana State Library.

District	Name of HAT Assignment Area	Area Square Miles	Number of BMAs in Assigned Area	HAT Mileage for Oct & Nov 2015	Other Information
1	Sand Springs District	4,647	45	7,266	2 HAT's, Issue permission & reservations for 1 BMA (Hooker Ranch), 26 Type 1 BMA's serviced (57 sign-in boxes), patrol entire district and respond to any issues or complaints on both Type 1 & Type 2 BMA's, 30+ documented landowner contacts, 30 documented hunter contacts in field while patrolling
2	Circle District	9,476	86	8,348	1 HAT, 43 Type 1 BMA's serviced (88 sign-in boxes), patrol entire district and respond to any issues or complaints on both Type 1 & Type 2 BMA's
3	Hysham District	3,990	28	10,847	2 HAT's, Issue permission & reservations for 2 BMA's (PV Ranch & Froze-to-Death Grazing District), 7 Type 1 BMA's serviced (9 sign-in boxes), patrol entire district and respond to any issues or complaints on both Type 1 & Type 2 BMA's, 25 documented landowner contacts, 228 documented hunter contacts in field while patrolling
4	Colstrip District	1,581	6	10,019	2 HAT's, Issue permission & reservations for 3 BMA's (Rocker Six Cattle Co., Greenleaf Land & Livestock, Highland Rim Properties), 2 Type 1 BMA's serviced (3 sign-in boxes), patrol entire district and respond to any issues or complaints on both Type 1 and Type 2 BMA's, 150 landowner contacts (met almost daily with area landowners), 150 documented hunter contacts in field while patrolling
5	Ekalaka District	1,689	32	3,611	2 HAT's, Issue permission & reservations for 2 BMA's (Ringling/Castleberry & Guyer Ranch), 8 Type 1 BMA's serviced (12 sign-in boxes), patrol entire district and respond to any issues or complaints on both Type 1 & Type 2 BMA's, 24 documented landowner contacts, 20 documented hunter contacts in field while patrolling
6	Broadus District	3,719	10	12,603	2 HAT's, Issue permission & reservations for 1 BMA (Pezzarossi Ranch), 5 Type 1 BMA's serviced (11 sign-in boxes), patrol entire district and respond to any issues or complaints on both Type 1 & Type 2 BMA's, 44 documented landowner contacts, 402 documented hunter contacts in field while patrolling
7	Miles City District	5,339	59	4,000	1 HAT plus Hunting Access Coordinator and office staff, Issue permission & reservations for 6 BMA's (Pfaff Ranch, Moore Ranch, Ft. Keogh, Aberg Ranch, Bice Ranch, BB&H Ranch), 13 Type 1 BMA's serviced (22 sign-in boxes), patrol entire district and respond to any issues or complaints on both Type 1 & Type 2 BMA's