

Water Policy Interim Committee

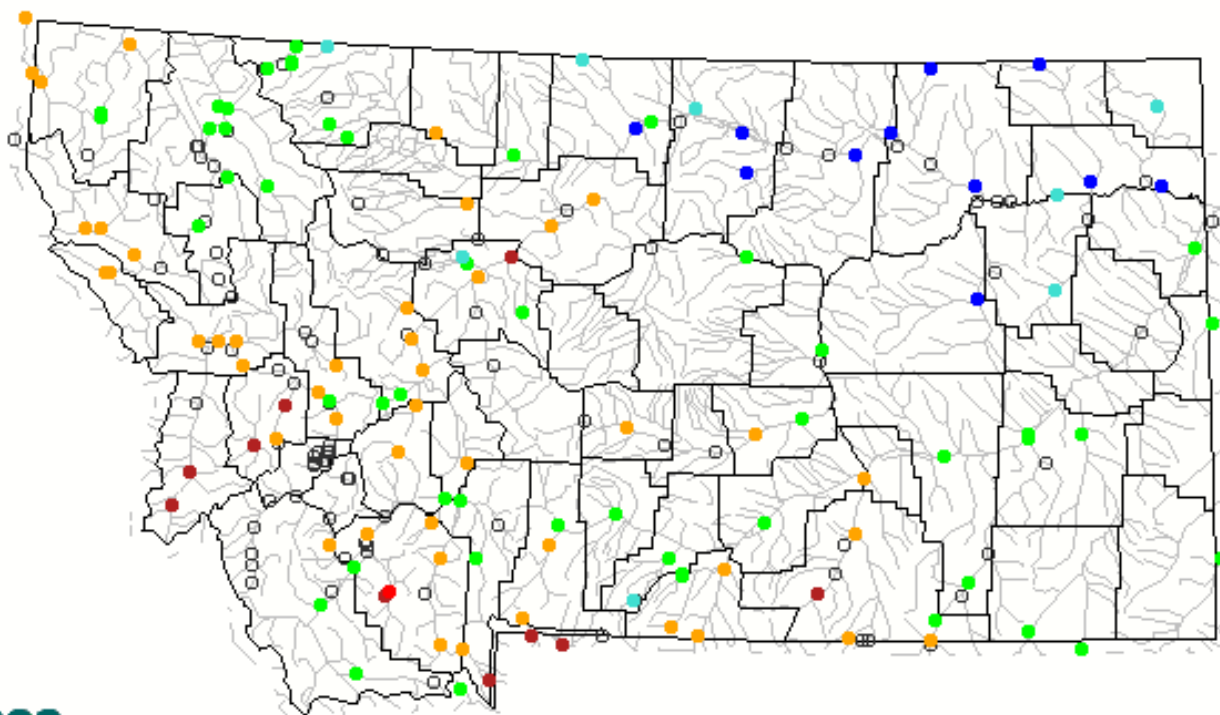
Water Supply Outlook

June 18, 2013

Montana Fish Wildlife and Parks

M. Mclane





Choose a data retrieval option and select a location on the map

List of all stations Single station Nearest stations Peak flow

Explanation - Percentile classes							
Low	<10 Much below normal	10-24 Below normal	25-75 Normal	76-90 Above normal	>90 Much above normal	High	Not-ranked






http://waterwatch.usgs.gov/index.php?r=mt&id=ww_current

<http://www.wcc.nrcs.usda.gov/cgibin/precup-graph.pl?state=MT>

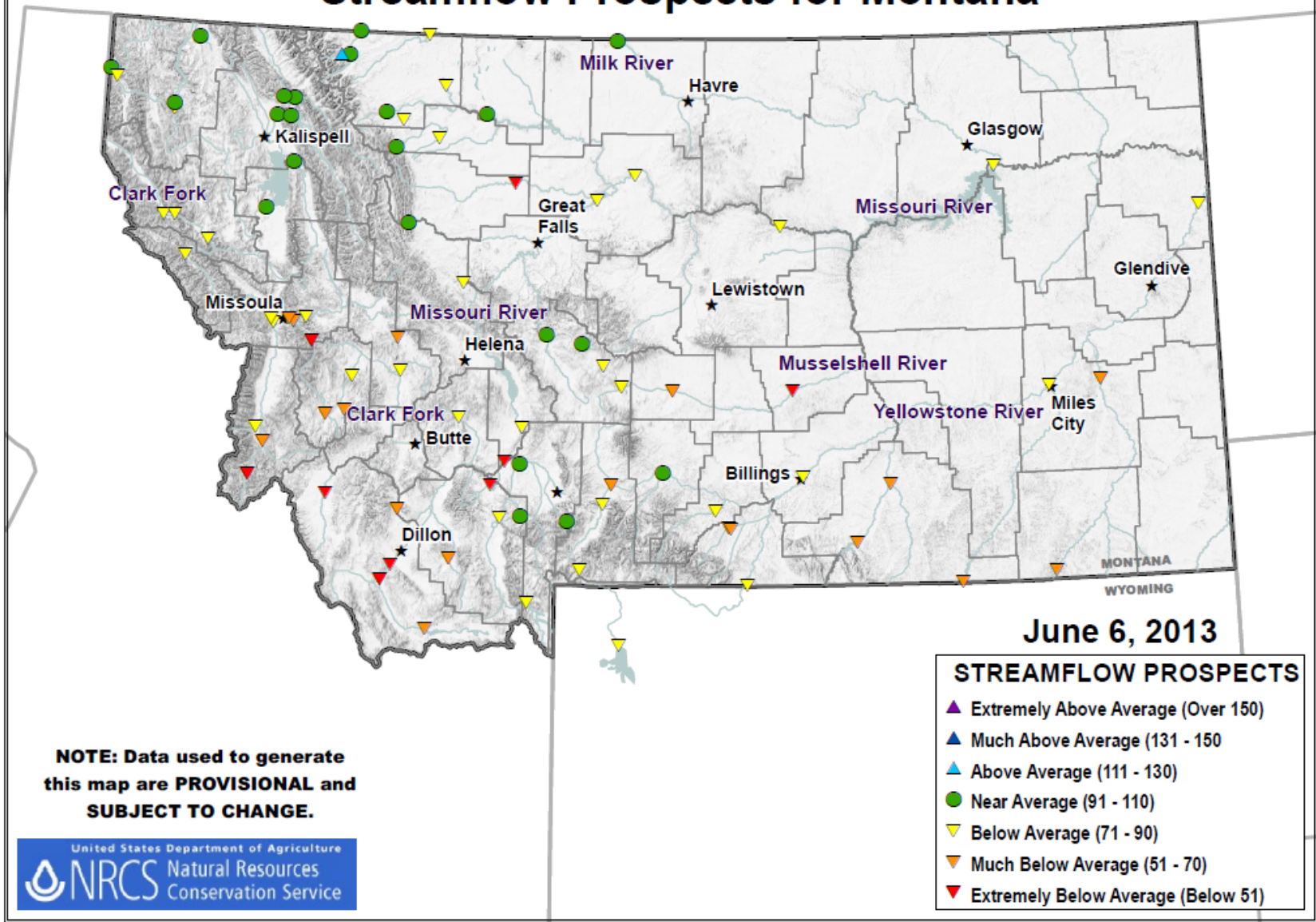
MONTANA SNOTEL Year-to-Date Precipitation Update Graph

As of MONDAY: JUNE 17, 2013

Basin	Year-to-Date Precipitation Percent of Average
KOOTENAI RIVER BASIN	105%
FLATHEAD RIVER BASIN	107%
UPPER CLARK FORK RIVER BASIN	93%
BITTERROOT RIVER BASIN	91%
LOWER CLARK FORK RIVER BASIN	101%
JEFFERSON RIVER BASIN	85%
MADISON RIVER BASIN	85%
GALLATIN RIVER BASIN	94%
MISSOURI HEADWATERS	87%
HEADWATERS MISSOURI MAINSTEM	97%
SMITH, JUDITH, AND MUSSELSHELL RIVER BASINS	104%
SUN, TETON AND MARIAS RIVER BASINS	102%
MISSOURI MAINSTEM RIVER BASIN	103%
ST MARY AND MILK RIVER BASINS	118%
UPPER YELLOWSTONE RIVER BASIN	91%
WIND RIVER BASIN (WYOMING)	76%
SHOSHONE RIVER BASIN (WYOMING)	91%
BIGHORN RIVER BASIN (WYOMING)	91%
TONGUE RIVER BASIN (WYOMING)	89%
POWDER RIVER BASIN (WYOMING)	94%
LOWER YELLOWSTONE RIVER BASIN	86%

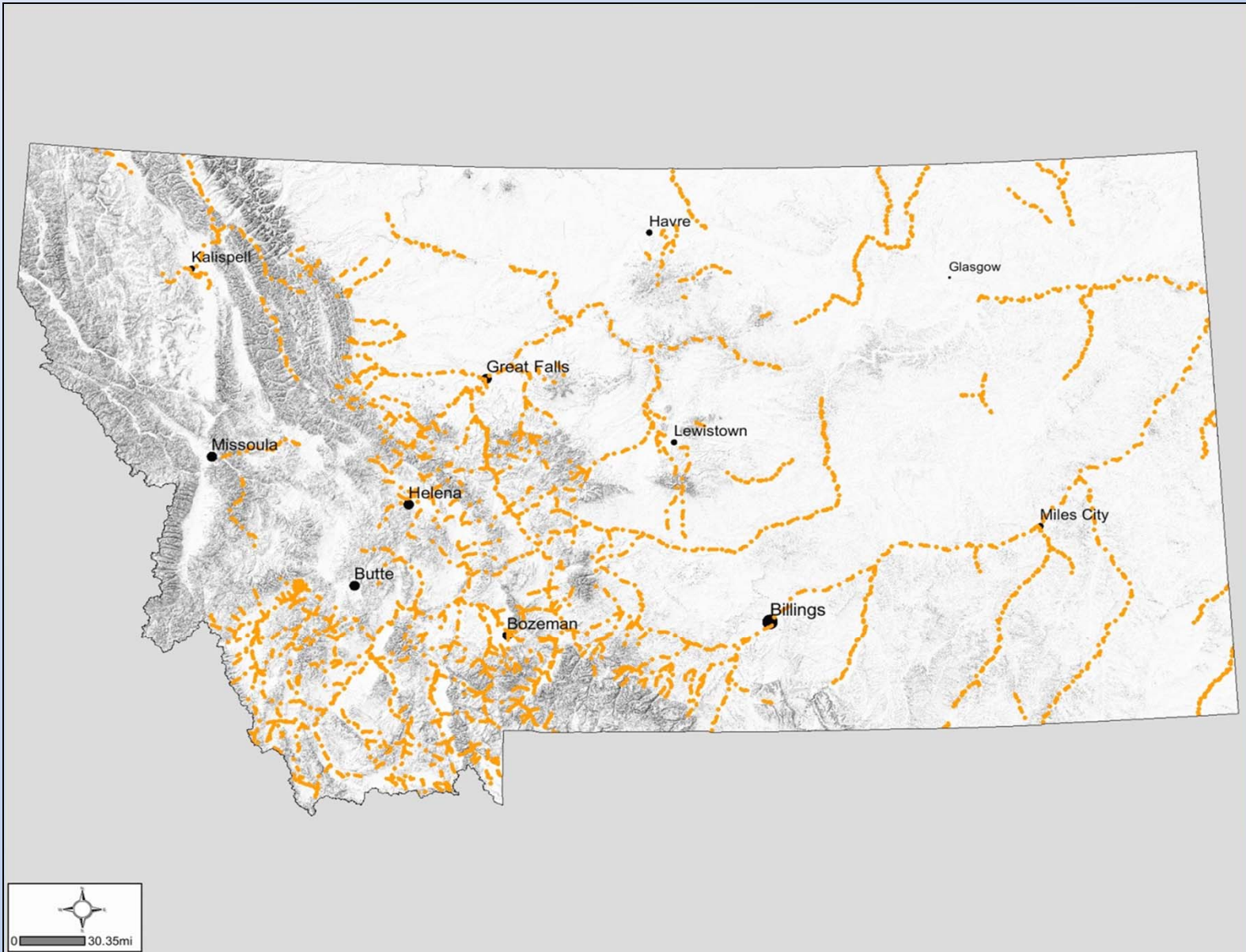
Legend:  <70%  70-90%  91-110%  111-130%  >130%

Streamflow Prospects for Montana



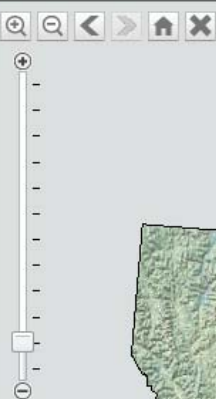
<http://nris.mt.gov/Nrcs/streamflow/Monthly.asp>

FWP In-stream Water Rights



In-stream Water Rights Review

Tools ▾ Basemaps ▾



Water Rights Review Tool [X]

Calculate Flows

Select a catchment in the table below to continue

Catchments

Export Data

Catchment description	Current Flow Calculation	Current Flow (cfs)	Current In-Stream Flow Requirement (cfs)
Battle Crk	+ 101 cfs (site #06151500)	101	6
Beaver Creek Basin	+ 773 cfs (site #06167500)	773	11
Beaver Crk Abv Beaver Crk Res	No associated gauges	unknown	7
Beaver Crk Abv Reservation Boundary	No associated gauges	unknown	0.2
Beaverhead R	+ 159 cfs (site #06018500)	159	200
Beaverhead R Abv East Bench Divide Dam	+ 646 cfs (site #06016000)	646	200
Big Hole River Abv Old Divide Dam	+ 1640 cfs (site #06025250)	1640	800

1:4,622,325

73 Miles

Lat: 43.8157 Long: -99.5796



In-stream Water Rights Review

Tools ▾ Basemaps ▾



Water Rights Review Tool ✕

Calculate Flows

Find Junior Water Rights

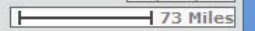
Start Over

Catchments In-Stream Rights (Beaverhead R)

Export Data

Make Call?	Stream	Location	Type	Flow	WRNUMBER	WRKEY	Priority Date	Valid Dates
<input checked="" type="checkbox"/>	Beaverhead River	East Bench Diversion Dam at Barretts to mouth	Reservation	200	41B 30017402	363421-1	Jul 1, 1985	01/01-12/31

1:4,622,325



In-stream Water Rights Review

Tools ▾ Basemaps ▾

Water Rights Review Tool ✕

Calculate Flows
Find Junior Water Rights
Start Over

Catchments
In-Stream Rights (Beaverhead R)
Junior Water Rights (Beaverhead R)

Export Data

<input type="checkbox"/>	Per Of Div	Multiple Owners	WRNUMBER	Abstract	Priority Date	WR Type	Source(s)	Means of Div
<input type="checkbox"/>	APRIL 1 to NOVEMBER 30	no	41A 86022 00	View	Jul 2, 1987	PROVISIONAL PERMIT	JEFF DAVIS CREEK	PUMP
<input type="checkbox"/>	JANUARY 1 to DECEMBER 31	no	41C 77973 00	View	Jul 22, 1991	PROVISIONAL PERMIT	ALDER GULCH CREEK, SURFACE WATER	PUMP
<input type="checkbox"/>	JANUARY 1 to DECEMBER 31	no	41A 79767 00	View	Nov 22, 1991	PROVISIONAL PERMIT	BIRCH CREEK	PIPELINE
<input type="checkbox"/>	JANUARY 1 to DECEMBER 31	no	41C 74409 00	View	Jun 13, 1990	PROVISIONAL PERMIT	GREENHORN CREEK	HEADGATE
<input type="checkbox"/>	MAY 1 to	no	41C 81818 00	View	Aug 22,	PROVISIONAL PERMIT	GRANITE CREEK, EAST	PUMP

1:2,311,162

In-stream Water Rights Review

Tools ▾ Basemaps ▾

Click Results

WRNUMBER: 41C 77973 00
 WRKEY: 143513-1
 Abstract: [View](#)
 ENFPRIDATE: Mon Jul 22 00:00:00 MDT 1991
 WRTYPE: PROVISIONAL PERMIT
 sources: ALDER GULCH CREEK,SURFACE WATER

Water Rights Review Tool

Calculate Flows

Find Junior Water Rights

Start Over

Catchments
In-Stream Rights (Beaverhead R)
Junior Water Rights (Beaverhead R)

Export Data

Exclude from export?	Per Of Div	Multiple Owners	WRNUMBER	Abstract	Priority Date	WR Type	Source(s)	Means of Div
<input type="checkbox"/>	APRIL 1 to NOVEMBER 30	no	41A 66022 00	View	Jul 2, 1987	PROVISIONAL PERMIT	JEFF DAVIS CREEK	PUMP
<input type="checkbox"/>	JANUARY 1 to DECEMBER 31	no	41C 77973 00	View	Jul 22, 1991	PROVISIONAL PERMIT	ALDER GULCH CREEK,SURFACE WATER	PUMP
<input type="checkbox"/>	JANUARY 1 to DECEMBER 31	no	41A 79767 00	View	Nov 22, 1991	PROVISIONAL PERMIT	BIRCH CREEK	PIPELINE
<input type="checkbox"/>	JANUARY 1 to DECEMBER 31	no	41C 74409 00	View	Jun 13, 1990	PROVISIONAL PERMIT	GREENHORN CREEK	HEADGATE
<input type="checkbox"/>	MAY 1 to	no	41C 81618 00	View	Aug 22,	PROVISIONAL PERMIT	GRANITE CREEK, EAST	PUMP

1:2,311,162

Management Options

- Voluntary Drought Plans
 - Jefferson River
 - Big Hole River
 - Ruby River
 - Blackfoot River
- Water Commissioners / Ditch Riders
 - Musselshell River Enforcement Project
 - Bitterroot River – Water Commissioner
- Making Call for Water
 - Water user to water user