

A cartoon-style illustration of a wooden fence with six vertical posts. A light blue sign with a wood-grain pattern is attached to the fence, featuring the text "2011 Annual Recap of Milk Receipts and Usage".

**2011
Annual Recap
of
Milk Receipts
and
Usage**

**State of Montana
Department of Livestock
Centralized Services Division
Milk Control Bureau
Helena, Montana**

Milk Control Board

BOARD MEMBER	TERM EXPIRES
Gary Parker, Chairman of the Board	January 1, 2013
Larry Van Dyke, Vice Chairman of the Board	January 1, 2013
W. Scott Mitchell, Board Member	January 1, 2015
Wade Weber, Board Member	January 1, 2013
Jerrold Weissman, Board Member	January 1, 2015

Milk Control Bureau

Administrative Staff

George H. Harris, Administrator

Monte Nick, Bureau Chief

Roy Hemry, Auditor

Patti Thompson, Program Specialist

Erin Broadwater, Administrative Assistant

Milk Control Bureau
Established in 1935

MONTANA PRODUCTION

The producers in Montana own 12,048 dairy cows which produced an average of 23,390 pounds of milk each.

	<u>TOTAL PRODUCTION</u>	<u>QUOTA MILK AT TEST</u>
Pounds of Milk	281,807,338	269,649,181
Average Weighted Test	3.70%	3.68%
Producer Receipts (gross)	\$55,892,809	\$53,607,876
Average Weighted Blend Price	\$19.83	\$19.88
Average Fat Blend Price	\$3.079	\$3.157

MONTANA LICENSEES

License Applications processed for Fiscal Year July 1, 2010 through June 30, 2011

- 4 In-State Distributors
- 36 Jobbers
- 31 Out-of-State Distributors
- 71 Dairy Producers

MONTANA CONSUMPTION

Based on figures from the provisional estimate by the U.S. Census Bureau, the total population of Montana for the year is 998,199. The cost to consumers for the Milk Control Program (based on fluid consumption only) per quart was \$0.0025.

Converting all milk products used by consumers to milk equivalents (including cottage cheese, ice cream, hard cheese, and butter) the cost of the program to the consumer was \$0.0020 per quart.

The above calculations are based on a total expenditure by this agency for the calendar year 2011 of \$276,766.

Per capita consumption of fluid milk in Montana using the above population figures was 240.54 pounds or 111.62 quarts.

Per capita consumption of all milk products was 305.17 pounds.

TOTAL MILK RECEIPTS IN MONTANA

Total pounds of Grade 'A' Milk Produced by Montana Producers and Sold to Montana Processors: 281,807,338 pounds

TOTAL UTILIZATION OF *PRODUCER* MILK:

	PRODUCT LBS	% OF USAGE	BUTTERFAT LBS
CLASS I	170,069,740	60.35%	2,846,165
CLASS II	7,700,516	2.73%	984,272
CLASS III	104,037,082	36.92%	6,610,394
TOTAL	281,807,338	100.00%	10,440,831

No Pool Producer-Distributors were operating in Montana during the Calendar Year 2011

Total pounds of Grade 'A' Milk Imported: 270,178,611 pounds

TOTAL UTILIZATION OF *IMPORTED* MILK:

	PRODUCT LBS	% OF USAGE	BUTTERFAT LBS
CLASS I	248,153,199	91.85%	4,166,916
CLASS II	22,025,412	8.15%	1,524,433
CLASS III	0	0.00%	0
TOTAL	270,178,611	100.00%	5,691,349

Total Milk Received from Ungraded Grade 'B' Sources: 126,426 pounds

TOTAL UTILIZATION OF *UNGRADED* SOURCES:

	PRODUCT LBS	% OF USAGE	BUTTERFAT LBS
CLASS III	126,426	100.00%	5,464

Total Reconstitution (skim powder and water): 1053 pounds

	PRODUCT LBS	% OF USAGE	BUTTERFAT LBS
CLASS III	1,053	100.00%	0

Total Milk From all Sources: 552,113,428 pounds

	PRODUCT LBS	% OF USAGE	BUTTERFAT LBS
CLASS I	418,222,939	75.75%	7,013,081
CLASS II	29,725,928	5.38%	2,508,705
CLASS III	104,164,561	18.87%	6,615,858
TOTAL	552,113,428	100.00%	16,137,644

Total Additives Used in Montana Grade 'A' Plants: 1,570,140 pounds

UTILIZATION OF TOTAL PRODUCER MILK

Delivered to In-State Distributors

DISTRIBUTOR	POUNDS OF PRODUCER MILK			TOTAL
	CLASS 1	CLASS II	CLASS III	POUNDS MILK PRODUCED
Darigold, Bozeman	61,841,235	2,168,421	90,576,613	154,586,269
Meadow Gold, Billings	18,007,693	493,905	1,352,376	19,853,974
Meadow Gold, Great Falls	88,991,983	4,683,647	12,101,146	105,776,776
MCE - Dairy Farm	1,228,829	354,543	6,947	1,590,319
TOTALS	170,069,740	7,700,516	104,037,082	281,807,338
PERCENTAGES	60%	3%	37%	100%

UTILIZATION OF TOTAL QUOTA MILK

Delivered to In-State Distributors

DISTRIBUTOR	POUNDS OF QUOTA MILK			TOTAL QUOTA
	CLASS 1	CLASS II	CLASS III	POUNDS MILK PRODUCED
Darigold, Bozeman	91,017,790	4,124,217	48,770,316	143,912,322
Meadow Gold, Billings	12,380,418	558,970	6,617,868	19,557,256
Meadow Gold, Great Falls	65,989,888	2,986,769	35,327,291	104,303,948
MCE - Dairy Farm	681,645	30,560	363,450	1,075,655
TOTALS	170,069,740	7,700,516	91,078,925	268,849,181
PERCENTAGES	63%	3%	34%	100%



POOLED MILK INFORMATION

BASED ON 3.5% BUTTERFAT RATIO

MONTH	POUNDS QUOTA MILK	POUNDS EXCESS MILK	QUOTA PRICE PER /CWT	EXCESS PRICE PER /CWT	QUOTA FAT PRICE PER POUND	EXCESS FAT PRICE PER POUND
JANUARY	22,476,023	1,066,568	\$16.3167	\$13.7036	\$1.5572	\$1.4100
FEBRUARY	20,345,310	856,540	\$17.8422	\$14.0823	\$1.9024	\$1.4100
MARCH	22,492,500	917,671	\$19.2695	\$17.2651	\$1.9500	\$1.7200
APRIL	22,992,638	240,452	\$20.2521	\$17.8163	\$1.9616	\$1.7800
MAY	22,933,605	1,115,323	\$20.5595	\$18.4856	\$1.9147	\$1.7200
JUNE	22,300,813	1,200,838	\$20.7135	\$18.1352	\$1.9808	\$1.7800
JULY	23,167,058	1,486,437	\$21.1525	\$18.7126	\$2.0606	\$1.8500
AUGUST	23,213,764	1,357,531	\$21.6065	\$18.5994	\$1.9686	\$1.7600
SEPTEMBER	22,164,458	1,072,674	\$22.5207	\$19.1753	\$2.0013	\$1.7600
OCTOBER	22,639,925	1,036,902	\$19.9341	\$18.3168	\$1.7360	\$1.5100
NOVEMBER	22,045,930	910,261	\$19.7348	\$17.6310	\$1.7210	\$1.5900
DECEMBER	22,877,157	1,066,960	\$18.9851	\$17.8439	\$1.5978	\$1.5900

TOTAL POUNDS **269,649,181** **12,328,157**

AVERAGE BASED ON 3.5% MILK **\$19.9073** **\$17.4806** **\$1.8627** **\$1.6567**

FARM-TO-PLANT HAULING

(dollar amounts are per CWT)

PLANT	POUNDS HAULED	COST OF HAULING	AVERAGE
Darigold, Bozeman	154,586,269	\$945,207.45	0.6299
Meadow Gold, Billings	19,853,974	\$280,135.41	1.3369
Meadow Gold, Great Falls	105,776,776	\$1,601,983.32	1.6477
YEARLY TOTALS	280,217,019	\$2,827,326.18	1.2048



RECEIPTS OF MILK HANDLED IN MONTANA

In-State Distributors, Producer-Distributors, Out-of-State Distributors



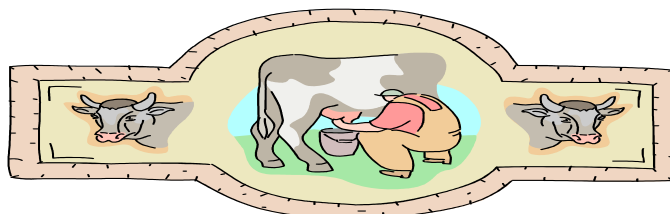
	PRODUCT POUNDS	BUTTERFAT POUNDS
Beginning Inventory - Packaged	11,688,126	185,758
Beginning Inventory - Class III Packaged	5,284,925	77,663
Beginning Inventory - Bulk	15,914,947	810,865
Producer Receipts	281,807,338	10,440,831
Ungraded	126,426	5,464
Butter in Ice Cream	0	0
Skim Powder & Water Reconstituted	1,053	0
Additives	1,570,140	

Receipts Other Source - Imports into Montana:

Class I Packaged	2,166,518	42,414
Class I Bulk	0	0
Class II Package (in milk equivalents)	22,064,473	1,526,238
Class II Bulk	0	0
Class III Package (in milk equivalents)	0	0
Class III Bulk	0	0
Total Receipts Other Source	24,230,991	1,568,651

Subtotal

RECEIPTS OF MONTANA DISTRIBUTORS	366,883,763	14,034,217
PRODUCER-DISTRIBUTOR RECEIPTS	0	0
OUT-OF-STATE DISTRIBUTORS (IMPORTS)	24,606,519	2,842,101
TOTAL RECEIPTS IN THE STATE OF MONTANA	391,490,282	16,876,318



UTILIZATION OF MILK HANDLED IN MONTANA

In-State Distributors, Producer-Distributors, Out-of-State Distributors

CLASS I USAGE	PRODUCT POUNDS	BUTTERFAT POUNDS
Total Class I Pkg. Sales by Montana Distributors	236,422,694	3,982,130
Packaged Sales In-State	(212,961,716)	(3,561,249)
Packaged Sales Out-of-State	(21,353,324)	(381,029)
ESL Sales In-State	(2,107,654)	(39,852)
ESL Sales Out-of-State	0	0
Transfers Between MT Plants		
Packaged Sales (included in total pkg sales)	(2,256,774)	(33,700)
Bulk Sales (used for pkg sales)	(12,098,086)	(211,455)
Imports Pkg (included in total pkg sales)	(2,166,518)	(42,414)
Imports Bulk (used for pkg sales)	0	0
Closing Package Inventory	11,730,505	184,786
SUBTOTAL: Montana Distributors	248,153,199	4,166,916
Producer-Distributors	0	0
Out-Of-State Distributors - Pkg.	15,784,667	315,010
TOTAL CLASS I UTILIZATION	248,153,199	4,166,916

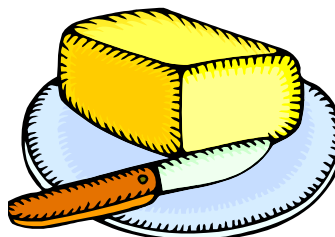
CLASS II USAGE

Ice Cream (frozen & mixes)	4,899,737	340,863
Cottage Cheese (all kinds)	261,744	6,165
Sour Cream & Dips	0	0
Yogurt/Egg Nog	1,428,309	328,782
Transfers Between MT Plants:		
Bulk Sales	(394,925)	(80,384)
Imports into Montana:		
Packaged Sales	22,064,473	1,526,238
Bulk Sales	0	0
Exported:		
Packaged Sales (included above)	(909,144)	(8,555)
Bulk Sales	0	0
Bulk Sales - Grade 'B' Manufacturing Plants	1,696,636	256,011
Bulk Sales	0	0
SUBTOTAL - Montana Distributors	30,350,899	2,458,059
Producer-Distributors	0	0
Out-Of-State Distributors - Pkg.	24,606,519	2,842,101
TOTAL CLASS II UTILIZATION	30,350,899	2,458,059

UTILIZATION OF MILK HANDLED IN MONTANA

In-State Distributors, Producer-Distributors, Out-of-State Distributors

CLASS III USAGE	PRODUCT POUNDS	BUTTERFAT POUNDS
Butter	435,988	71,387
Hard Cheese	0	0
Transfers Between MT Plants:		
Bulk Sales	(6,159,937)	(6,159,937)
Imports into Montana:		
Packaged Sales	0	0
Bulk Sales	0	0
Exported:		
Packaged Sales (included above)	0	0
Bulk Sales	118,870,430	7,547,614
Bulk Sales - Grade 'B' Manufacturing Plants	20,554	735
MT Producers Class III	0	0
Dumped	126,426	5,464
Closing Class III Pkg Inv.	4,806,378	69,866
Closing Bulk Inventory	16,362,045	807,524
SUBTOTAL - Montana Distributors	140,621,821	8,502,590
Producer-Distributors	0	0
Out-Of-State Distributors - Pkg.	57,402,823	3,412,406
TOTAL CLASS III UTILIZATION	140,621,821	8,502,590
TOTAL RECEIPTS IN MONTANA - ALL SOURCES	391,490,282	16,876,318
TOTAL PRODUCTS ACCOUNTED FOR IN MONTANA	419,125,919	15,127,565
TOTAL SHRINKAGE	(27,635,637)	1,748,754
MILK IMPORTED =	270,178,611	MILK EXPORTED = 5,691,349



BREAKDOWN OF CLASS I, II, & III

PACKAGED AND BULK IMPORTS

IMPORTS: Out-of-State Distributors and Montana Grade 'A' Distributors

CLASS I PRODUCTS:	GALLONS	PRODUCT LBS	BUTTERFAT LBS
Packaged	28,922,284	248,153,199	4,166,916
Bulk	0	0	0
TOTAL CLASS I IMPORTS		248,153,199	4,166,916

CLASS II PRODUCTS:	PRODUCT LBS	BUTTERFAT LBS
Bulk	0	0
Whipped Cream	920,025	346,218
Aerosol Whip	97,026	19,405
Half and Half	3,362,090	353,019
Table Cream	89,193	16,055
Ice Cream (frozen)	1,473,288	197,421
Ice Milk/Sherbet/Novelties	550,278	25,423
Regular Ice Cream Mix	0	0
MIX: Shake/MAS/Yogurt	4,883	210

	MILK EQUIVALENTS	BUTTERFAT LBS
Cottage Cheese (creamed)	12,080,306	118,387
Cottage Cheese (dry)	832,796	2,082
Sour Cream & Dips	2,188,345	437,669
Yogurt	427,182	8,544
TOTAL CLASS II IMPORTS	22,025,412	1,524,433

CLASS III PRODUCTS:	GALLONS	PRODUCT LBS	BUTTERFAT LBS
Bulk	0	0	0

	POUNDS	MILK EQUIVALENTS	BUTTERFAT LBS
Butter	0	0	0
Hard Cheese	0	0	0
Cream Cheese	0	0	0
TOTAL CLASS III IMPORTS		0	0
TOTAL POUNDS IMPORTED: CLASS I, II, & III			
Bulk & Package (in milk equivalents)		270,178,611	5,691,349

BREAKDOWN OF CLASS I, II, & III

PACKAGED AND BULK EXPORTS

EXPORTS: Montana Grade 'A' Distributors

CLASS I PRODUCTS:	PRODUCT LBS	BUTTERFAT LBS
Packaged	2,256,774	33,700
Bulk	12,098,086	211,455
TOTAL CLASS I EXPORTS	14,354,860	245,155

CLASS II PRODUCTS:	PRODUCT LBS	BUTTERFAT LBS
Bulk	Pounds	Butterfat
Whipped Cream	807,888	1,204
Aerosol Whip	0	0
Half and Half	101,256	7,351
Table Cream	0	0
Eggnog	0	0
Ice Cream (frozen)	0	0
Ice Milk/Sherbert/Novelties	0	0
Regular Ice Cream Mix	0	0
MIX: Shake/MAS/Yogurt	0	0

	POUNDS	MILK EQUIVALENTS	BUTTERFAT LBS
Cottage Cheese (creamed)	0	0	0
Cottage Cheese (dry)	0	0	0
Sour Cream & Dips	0	0	0
Yogurt	0	0	0
TOTAL CLASS II EXPORTS	909,144	8,555	

CLASS III PRODUCTS:	PRODUCT LBS	BUTTERFAT LBS
Bulk	118,870,430	7,547,614

	POUNDS	MILK EQUIVALENTS	BUTTERFAT LBS
Butter	0	0	0
Hard Cheese	0	0	0
Cream Cheese	0	0	0
TOTAL CLASS III EXPORTS	118,870,430	7,547,614	

TOTAL POUNDS EXPORTED: CLASS I, II, & III

Bulk & Package (in milk equivalents)

134,134,434

7,801,324

RECEIPTS OF MONTANA DISTRIBUTORS

Reconciliation

	PRODUCT POUNDS	BUTTERFAT POUNDS
Total Montana Receipts (derived from monthly audits)	391,490,282	16,876,318
Less: Transfers Between Montana Plants		
Class I Package	(2,213,965)	(33,065)
Class I Bulk	(8,726,175)	(155,010)
Class II Package	0	0
Class II Bulk	(341,942)	(62,762)
Class III Bulk	<u>(1,154,398)</u>	<u>(186,868)</u>
Total Transfers	(12,436,480)	(437,705)
Add: Class II Package (in milk equivalents)	0	0
Add: Class III Package (in milk equivalents)	<u>0</u>	<u>0</u>
Net Montana Receipts	379,053,802	16,438,613



BREAKDOWN OF TOTAL UNIT SALES OF FLUID MILK

14,354,860 pounds of product and 245,155 pounds of butterfat were EXPORTED products
248,153,199 pounds of product and 4,166,916 pounds of butterfat were IMPORTED products

PRODUCT	1/2 Pints	Pints	Quarts	1/2 Gallons	Gallons	Assorted Ounces	Product Pounds	BF Test	Butterfat Pounds
Homogenized Milk 3.2%	576,573	207,408	256,923	1,131,386	3,307,799	0	34,397,286	3.29%	1,131,949
Lowfat Milk 2%	5,435,379	659,537	437,814	2,460,683	8,890,467	0	91,824,096	1.96%	1,796,387
Lowfat Milk 1%	7,635,381	92,383	97,542	1,107,077	2,828,982	0	33,616,716	0.93%	313,890
Skim Milk	2,186,765	4,769	130,496	1,210,769	2,833,169	0	31,140,945	0.15%	47,269
Cholocate & Flavored Milk 3.25%	18	683,942	4	2	1,118,695	4,716	1,660,369	3.27%	54,361
Cholocate & Flavored Milk 2%	8,937	342,414	47,376	83,467	45,172	0	1,225,006	1.77%	21,657
Cholocate & Flavored Milk 1%	10,908,286	681,540	228,545	317,992	287,784	69,732	11,016,917	1.08%	118,912
Cholocate & Flavored Milk Skim	4,904,443	31,923	8,399	8,733	43,955	0	3,114,562	0.28%	8,611
Buttermilk	139,242	48,736	334,709	327,440	53,634	0	2,724,006	0.99%	26,865
Egg Nog	0	23,129	156,030	75,513	14,730	0	809,722	6.94%	56,167
Egg Nog Light	0	0	0	8,536	8,536	0	18,352	3.90%	717

IMPORTED AND EXPORTED MILK PRODUCTS BY MONTANA DISTRIBUTORS



	Imported Pounds	Exported Pounds
HOMOGENIZED MILK	290,543	7,564,174
LOWFAT 2%	684,595	15,297,965
LOWFAT 1%	243,149	6,135,969
SKIM	304,749	3,710,979
LACTAID	0	0
FLAVORED 3.25% (includes chocolate)	84,829	198,717
FLAVORED 2% (includes chocolate)	250,155	1,944
FLAVORED 1% (includes chocolate)	204,514	2,467,330
FLAVORED SKIM (includes chocolate)	0	0
BUTTERMILK	19,205	274,953
EGGNOG	84,779	63,554
CLASS I TOTAL	2,166,518	35,715,584

	Imported Lbs / Milk Equiv	Exported Lbs / Milk Equiv
HALF & HALF	3,362,090	101,256
TABLE CREAM	89,193	0
WHIP CREAM	920,025	807,888
AEROSOL WHIP	97,026	0
ICE CREAM	1,473,288	0
ICE MILK/SHERBET	39,062	0
ICE CREAM MIX	0	0
MAKE-A-SHAKE/SHAKE MIX	4,883	0
NOVELTIES	550,278	0
COTTAGE CHEESE - REGULAR	4,024,564	0
COTTAGE CHEESE - LOW FAT	8,055,743	0
COTTAGE CHEESE - DRY	832,796	0
SOUR CREAM/DIPS	2,188,345	0
YOGURT	427,182	0
CLASS II TOTAL	22,064,473	909,144

	Imported Milk Equivalents	Exported Milk Equivalents
BUTTER	0	0
HARD CHEESE	0	0
CREAM CHEESE	0	0
CLASS III TOTAL	0	0

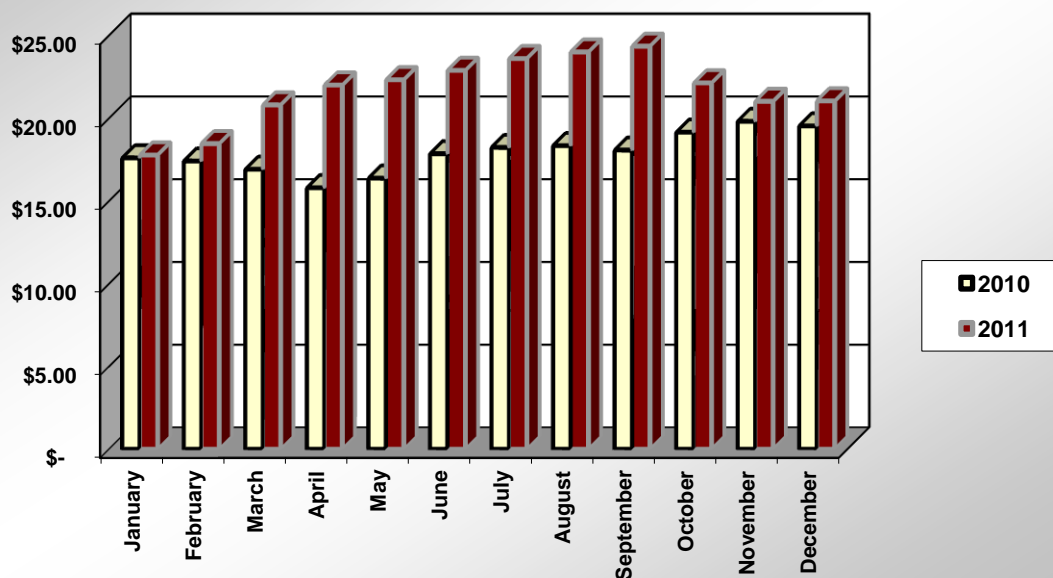
ANNOUNCED CLASS 1 PRICE IN MONTANA

The charts below show a Class I Price comparison between the current year and prior year.

Month	2010	2011	Difference	% of Change
January	\$ 17.58	\$ 17.75	\$ 0.17	1%
February	\$ 17.39	\$ 18.44	\$ 1.05	6%
March	\$ 16.89	\$ 20.78	\$ 3.89	19%
April	\$ 15.77	\$ 21.98	\$ 6.21	28%
May	\$ 16.35	\$ 22.30	\$ 5.95	27%
June	\$ 17.83	\$ 22.87	\$ 5.04	22%
July	\$ 18.21	\$ 23.58	\$ 5.37	23%
August	\$ 18.32	\$ 23.98	\$ 5.66	24%
September	\$ 18.05	\$ 24.33	\$ 6.28	26%
October	\$ 19.13	\$ 22.11	\$ 2.98	13%
November	\$ 19.79	\$ 21.00	\$ 1.21	6%
December	\$ 19.51	\$ 21.02	\$ 1.51	7%
Average	\$ 17.90	\$ 21.68	\$ 3.78	17%

Prices are per hundredweight (CWT)

Announced Class 1 Prices



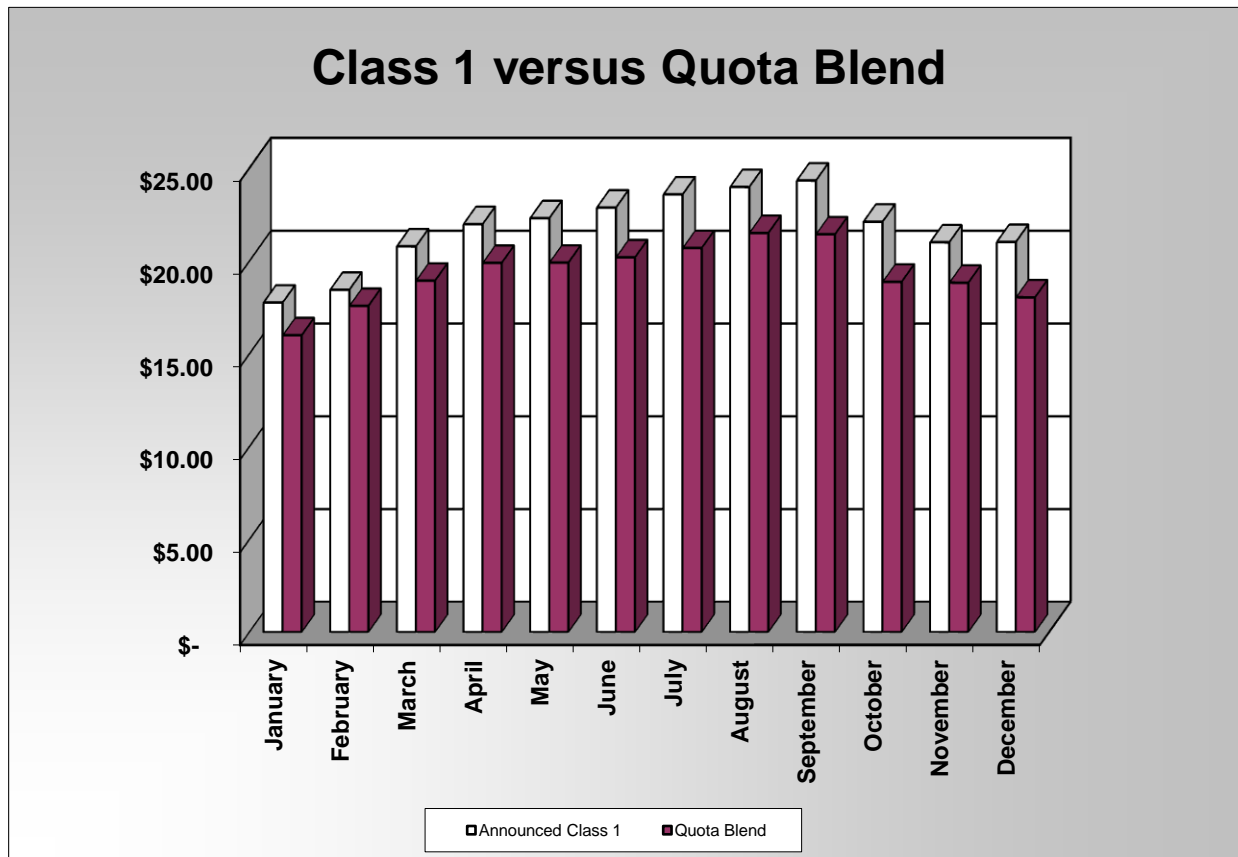
PRODUCER CLASS 1 & QUOTA BLEND PRICES

Charts below show a comparison between the announced class 1 price vs what producers get paid at the quota blend price.

Statistics from the Montana Milk Control Bureau

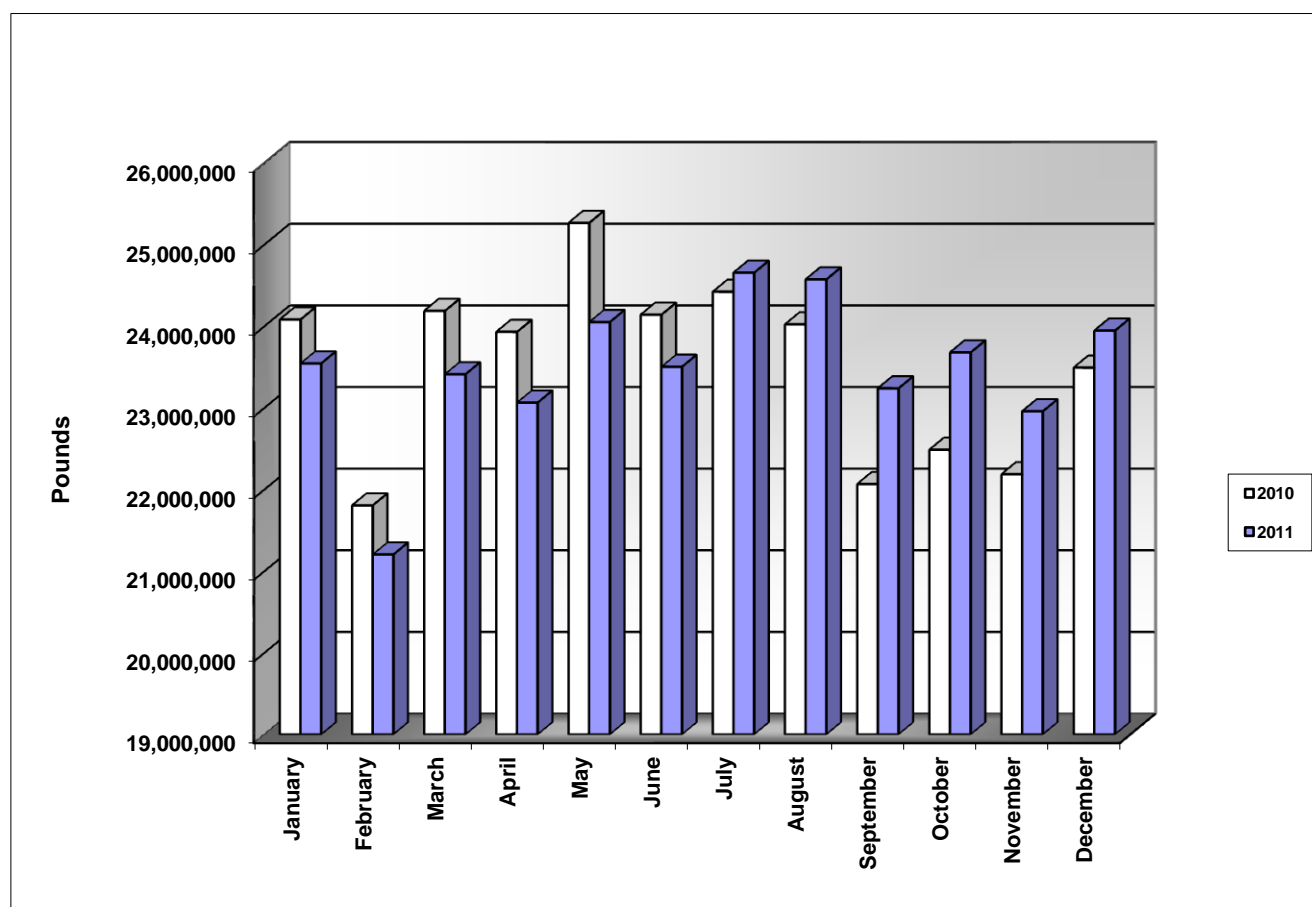
Month	Announced Class 1	Quota Blend	Difference	% of Change
January	\$ 17.75	\$ 15.99	\$ (1.76)	-11%
February	\$ 18.44	\$ 17.57	\$ (0.87)	-5%
March	\$ 20.78	\$ 18.93	\$ (1.85)	-10%
April	\$ 21.98	\$ 19.89	\$ (2.09)	-11%
May	\$ 22.30	\$ 19.90	\$ (2.40)	-12%
June	\$ 22.87	\$ 20.19	\$ (2.68)	-13%
July	\$ 23.58	\$ 20.69	\$ (2.89)	-14%
August	\$ 23.98	\$ 21.50	\$ (2.48)	-12%
September	\$ 24.33	\$ 21.43	\$ (2.90)	-14%
October	\$ 22.11	\$ 18.87	\$ (3.24)	-17%
November	\$ 21.00	\$ 18.82	\$ (2.18)	-12%
December	\$ 21.02	\$ 18.03	\$ (2.99)	-17%
Average	\$ 21.68	\$ 19.32	\$ (2.36)	-12%

Prices are per hundredweight (CWT)

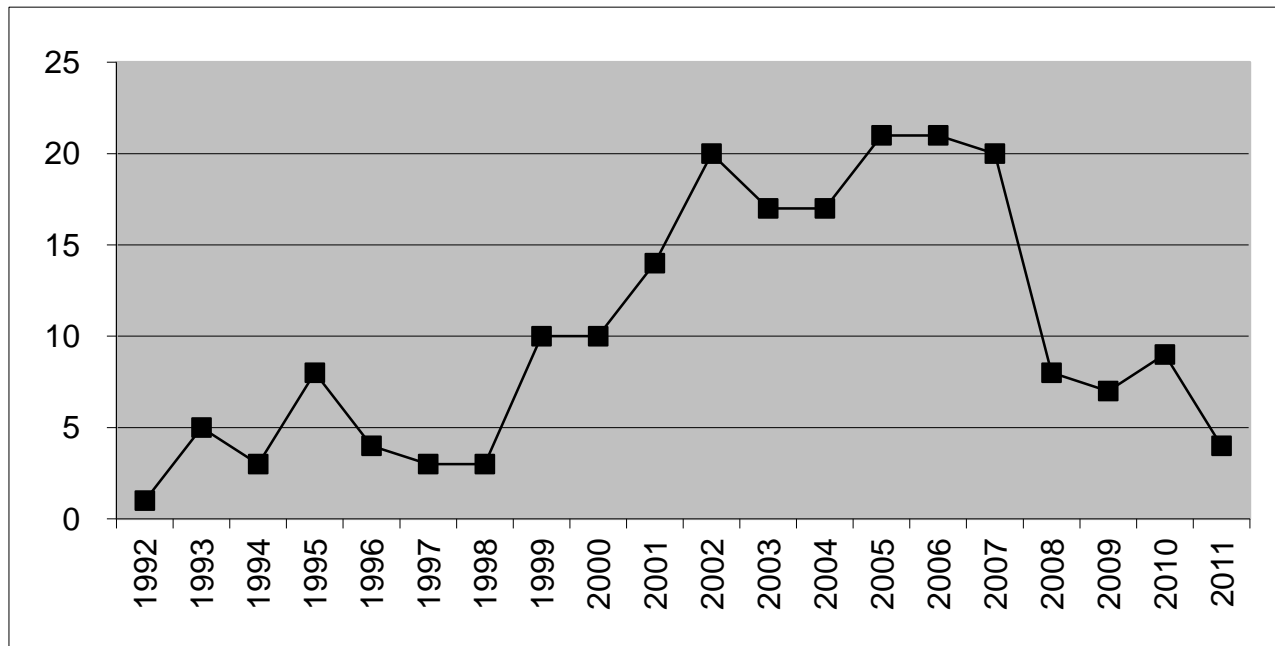


PRODUCTION COMPARISON

Month	2010	2011	Difference	% of Change
January	24,080,860	23,542,591	(538,269)	-2.29%
February	21,803,703	21,201,850	(601,853)	-2.84%
March	24,185,643	23,410,171	(775,472)	-3.31%
April	23,929,284	23,063,090	(866,194)	-3.76%
May	25,263,761	24,048,928	(1,214,833)	-5.05%
June	24,138,575	23,501,651	(636,924)	-2.71%
July	24,420,325	24,653,495	233,170	0.95%
August	24,020,888	24,571,295	550,407	2.24%
September	22,064,699	23,237,132	1,172,433	5.05%
October	22,484,619	23,676,827	1,192,208	5.04%
November	22,185,650	22,956,191	770,541	3.36%
December	23,490,594	23,944,117	453,523	1.89%
Totals	282,068,601	281,807,338	(261,263)	-0.09%



MONTANA QUOTA TRANSFERS

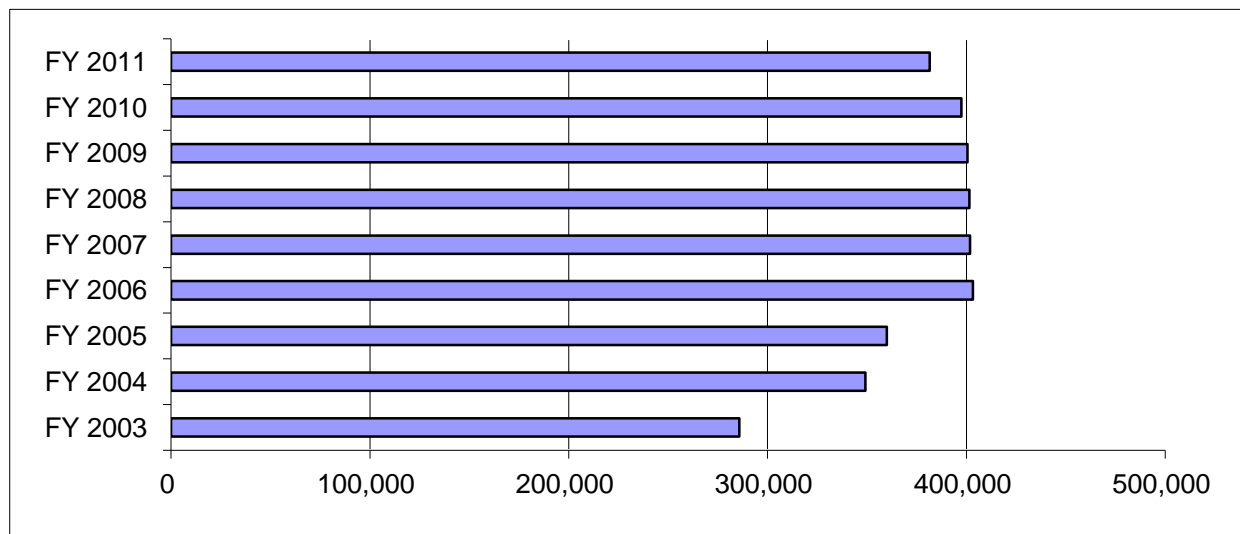


Percentages of Transfers

YEAR	No. of Transfers	Difference	% Change
1992	1	-	-
1993	5	4	400%
1994	3	-2	-40%
1995	8	5	167%
1996	4	-4	-50%
1997	3	-1	-25%
1998	3	0	0%
1999	10	7	233%
2000	10	0	0%
2001	14	4	40%

YEAR	No. of Transfers	Difference	% Change
2002	20	6	0
2003	17	-3	-15%
2004	17	0	0%
2005	21	4	24%
2006	21	0	0%
2007	20	-1	-5%
2008	8	-12	-60%
2009	7	-1	-13%
2010	9	2	29%
2011	4	-5	-56%

FUNDS COLLECTED FOR THE DIAGNOSTIC LAB AND MILK INSPECTIONS FROM MONTANA POOL PRODUCERS



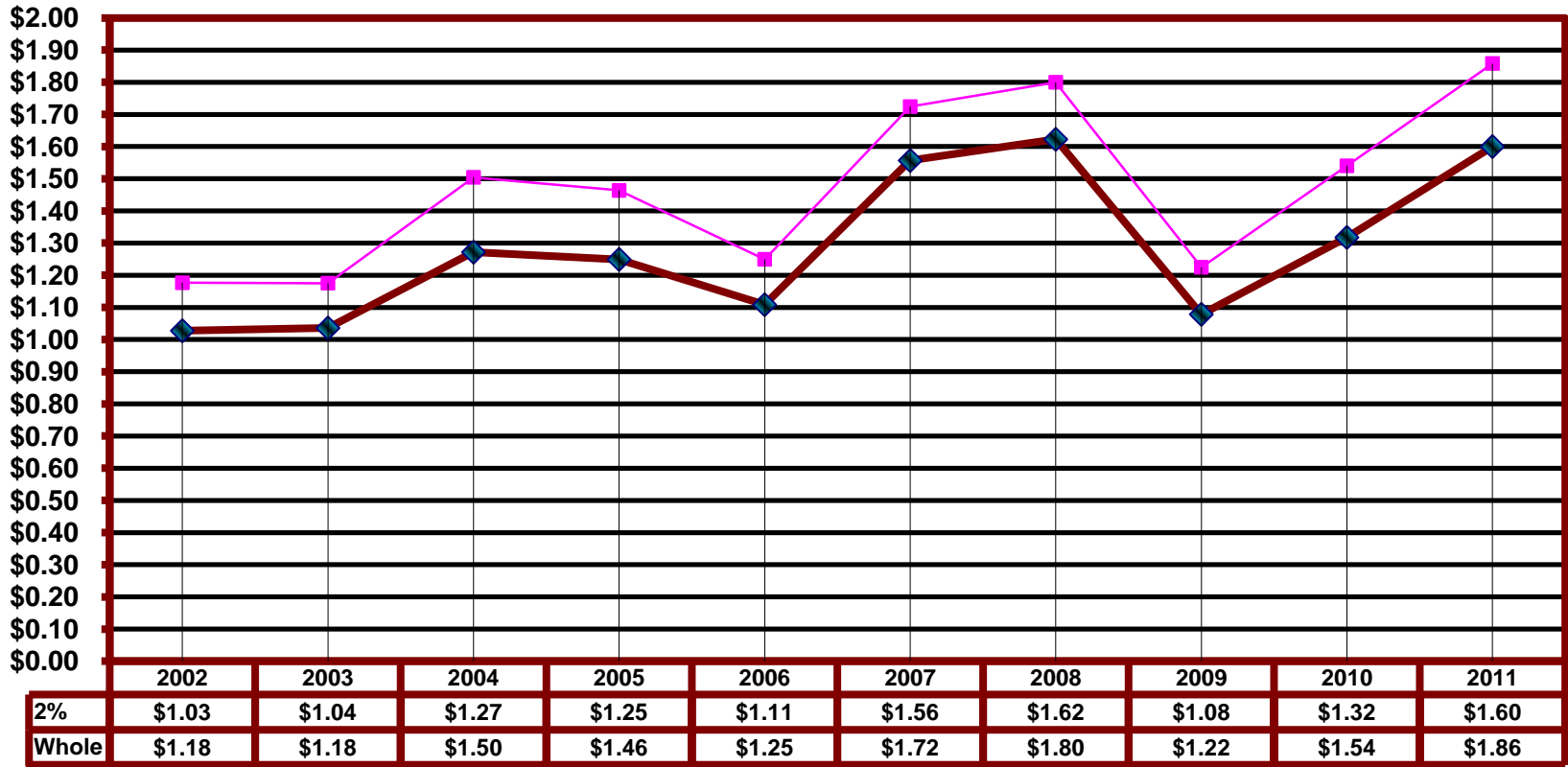
Changes in Rates

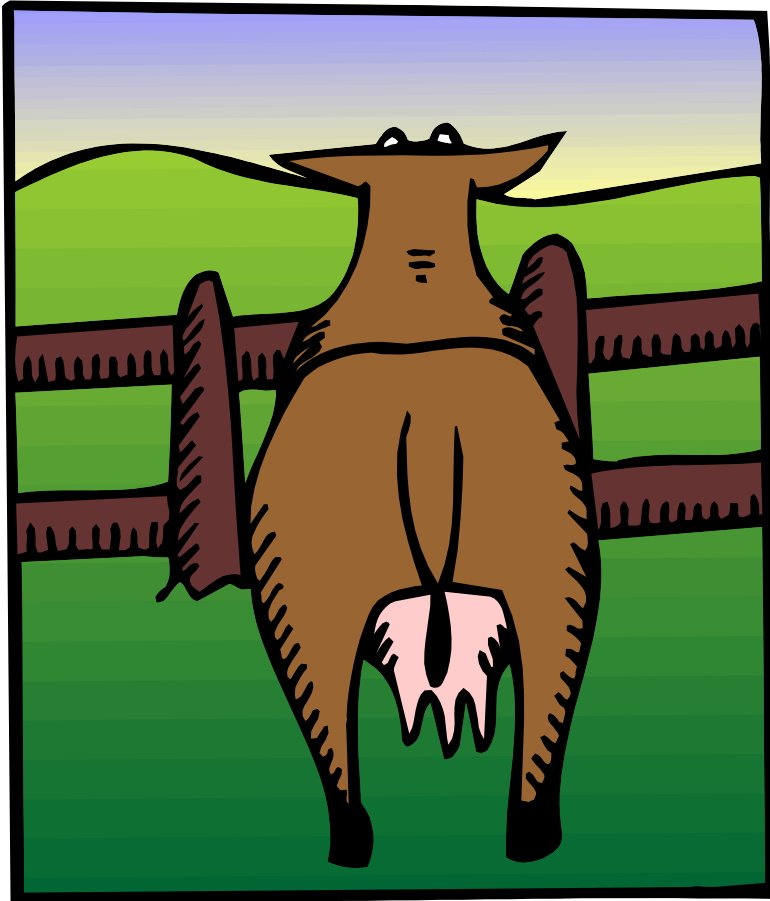
Period	Rate/Cwt
Jan 01 - Jul 03	0.1497
Jul 03 - Oct 04	0.1250
Nov 04 - Oct 05	0.1350
Nov 05 - Cur	0.1500

Percentages of Collections

Fiscal Year	Amount		
	Collected	Difference	% Change
FY 2003	\$285,836.92	-	-
FY 2004	\$349,255.31	\$ 63,418.39	22.2%
FY 2005	\$359,941.38	\$ 10,686.07	3.1%
FY 2006	\$403,238.08	\$ 43,296.70	12.0%
FY 2007	\$401,749.24	\$ (1,488.84)	-0.4%
FY 2008	\$401,438.27	\$ (310.97)	-0.1%
FY 2009	\$400,524.80	\$ (913.47)	-0.2%
FY 2010	\$397,521.83	\$ (3,002.97)	-0.7%
FY 2011	\$381,546.88	\$(15,974.95)	-4.0%

Average Price of Milk per Gallon Paid to Producer





The Udder End