

By the Numbers: Chouteau County

A comparison of Chouteau County in five proposed redistricting plans

Montana Districting and Apportionment Commission
Post Office Box 201706
Helena, MT 59620-1706

Phone: 406-444-5367

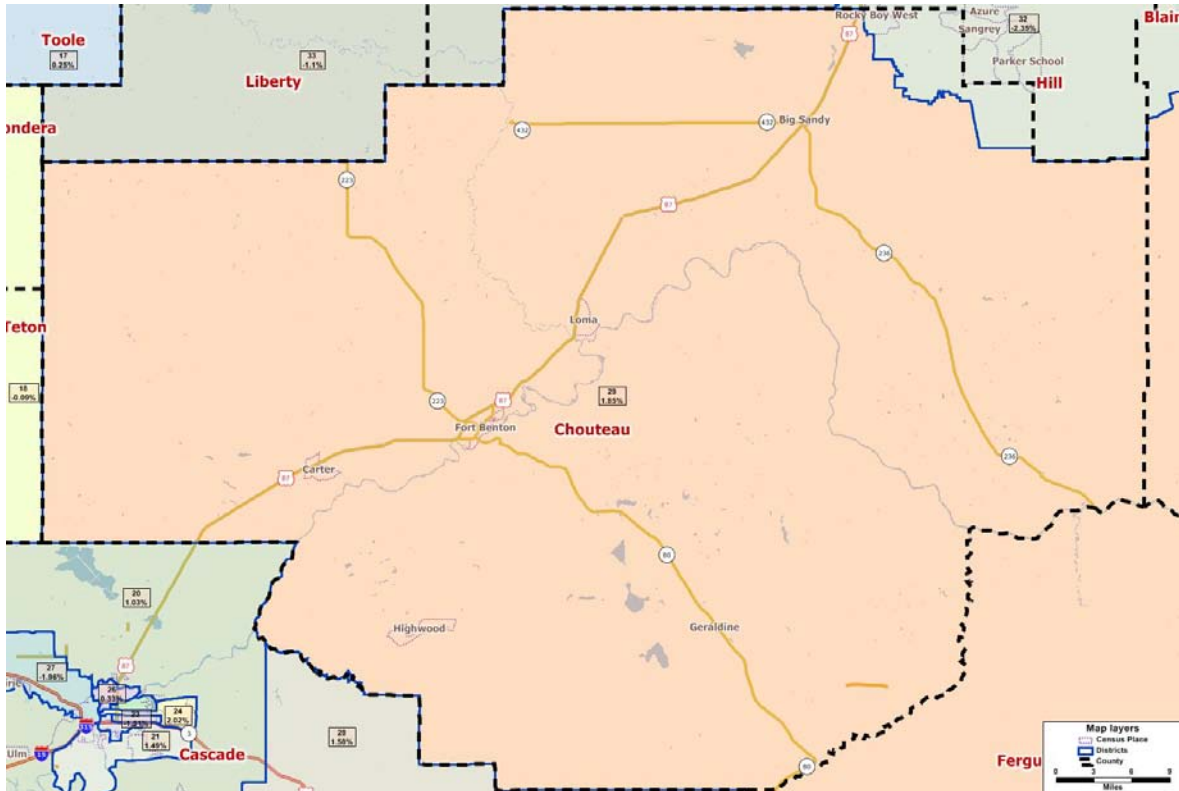
Fax: 406-444-3036

Email: districting@mt.gov

Website: www.leg.mt.gov/districting

Communities Plan

Theme: Integrates Montana communities of interest within multiple criteria



	<u>2010</u>	<u>2000</u>	<u>% Change</u>
County Population	5,813	5,970	-2.6%

Proposed Districts: 2 total

Proposed District Number	Total Population	Deviation*	# of People in District from Chouteau County
29	10,077	1.85%	4,546
32	9,661	-2.35%	1,267

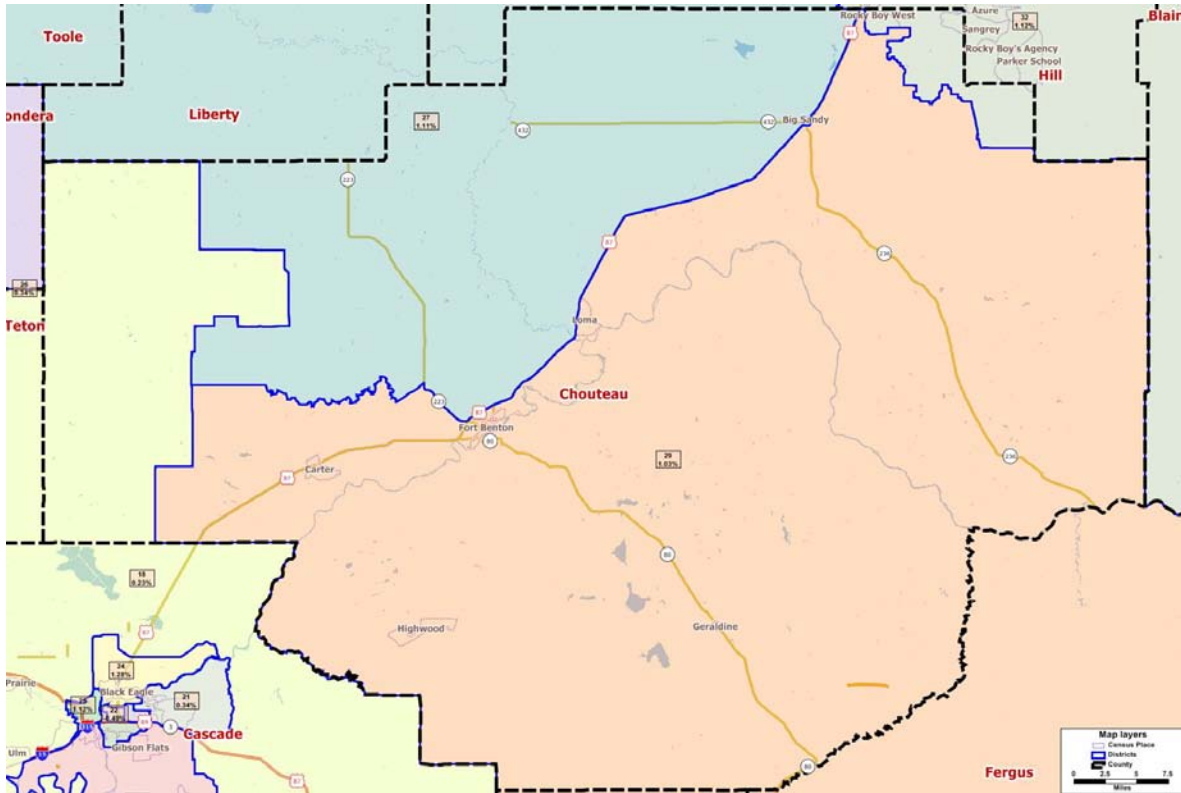
*Ideal house district size after 2010 Census: 9,894 people

Other counties included in proposed house district (# of people)

- 29 – Blaine (72), Fergus (5,459)
- 32 – Blaine (2,899), Hill (2,372), Phillips (3,123)

Deviation Plan

Theme: Emphasize the criterion on relative population equality between the districts



	<u>2010</u>	<u>2000</u>	<u>% Change</u>
County Population	5,813	5,970	-2.6%

Proposed Districts: 4 total

Proposed District Number	Total Population	Deviation*	# of People in District from Chouteau County
18	9,917	0.23%	250
27	10,004	1.11%	1,027
29	9,996	1.03%	3,273
32	10,005	1.12%	1,263

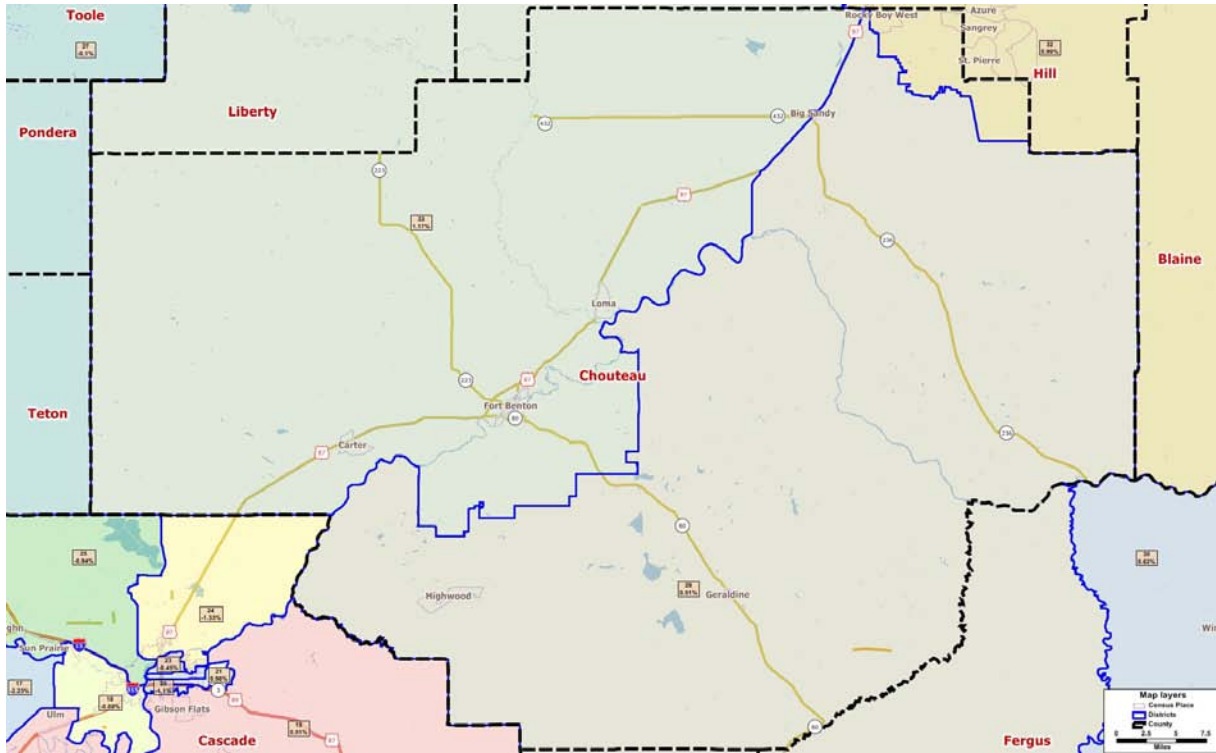
*Ideal house district size after 2010 Census: 9,894 people

Other counties included in proposed house district (# of people)

- 18 – Cascade (8,859), Teton (808)
- 27 – Hill (1,473), Liberty (2,180), Toole (5,324)
- 29 – Fergus (1,599), Golden Valley (884), Judith Basin (2,072), Wheatland (2,168)
- 32 – Blaine (3,328), Hill (2,746), Phillips (1,103), Valley (1,565)

Existing Plan

Theme: Use the existing legislative district lines as a starting point for new lines



	<u>2010</u>	<u>2000</u>	<u>% Change</u>
County Population	5,813	5,970	-2.6%

Proposed Districts: 3 total

Proposed District Number	Total Population	Deviation*	# of People in District from Chouteau County
29	9,944	0.51%	1,947
32	9,992	0.99%	1,267
33	10,010	1.17%	2,599

*Ideal house district size after 2010 Census: 9,894 people

Other counties included in proposed house district (# of people)

29 – Broadwater (779), Fergus (532), Golden Valley (884), Judith Basin (2,072), Meagher (1,562), Wheatland (2,168)

32 – Blaine (3,673), Hill (3,449), Phillips (982), Valley (621)

33 – Hill (1,213), Liberty (2,339), Toole (3,859)

Subdivision Plan

Theme: Attempt to keep political subdivisions intact



	<u>2010</u>	<u>2000</u>	<u>% Change</u>
County Population	5,813	5,970	-2.6%

Proposed Districts: 2 total

Proposed District Number	Total Population	Deviation*	# of People in District from Chouteau County
28	9,623	-2.74%	4,520
33	9,621	-2.76%	1,293

*Ideal house district size after 2010 Census: 9,894 people

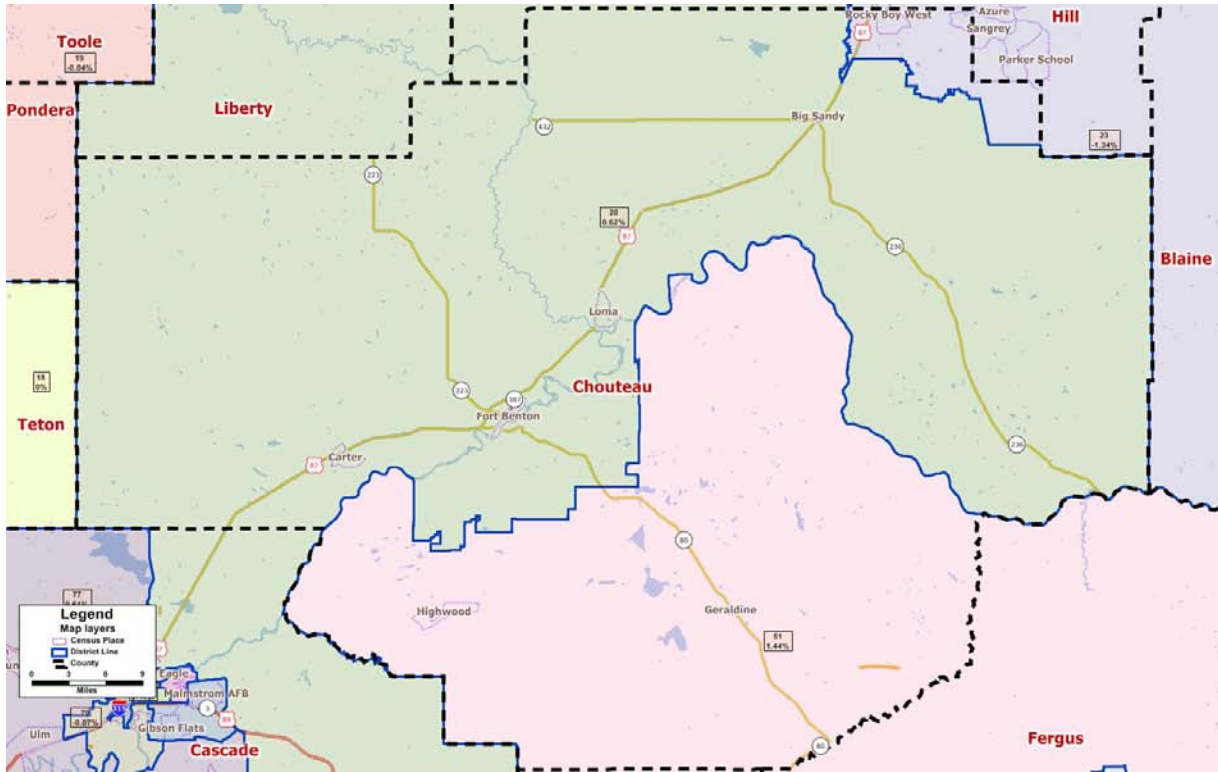
Other counties included in proposed house district (# of people)

28 – Hill (2,764), Liberty (2,339)

33 – Blaine (3,701), Hill (2,895), Phillips (1,010), Valley (722)

Urban Rural Plan

Theme: Emphasize clear lines between population centers and rural areas



	<u>2010</u>	<u>2000</u>	<u>% Change</u>
County Population	5,813	5,970	-2.6%

Proposed Districts: 3 total

Proposed District Number	Total Population	Deviation*	# of People in District from Chouteau County
20	9,955	0.62%	3,449
23	9,761	-1.34%	1,275
51	10,036	1.44%	1,089

*Ideal house district size after 2010 Census: 9,894 people

Other counties included in proposed house district (# of people)

20 – Cascade (2,599), Hill (1,568), Liberty (2,339)

23 – Blaine (3,679), Hill (2,795), Phillips (982), Valley (1,030)

51 – Fergus (1,932), Golden Valley (884), Judith Basin (2,072), Meagher (1,891), Wheatland (2,168)