



**Montana Department of
Natural Resources and Conservation**

Forested State Trust Lands

Draft HCP/EIS

**Environmental Quality Council
September 10, 2009**

An Overview and Update of the HCP project

What is the HCP

Goals and Objectives for both agencies

Highlight components of the HCP

The HCP and the EIS

Moving Forward



Project Managers

Mike O'Herron
DNRC Project Manager
406-542-4302
moherron@mt.gov

Kathleen Ports
USFWS Project Manager
406-542-4330
kports@mt.gov



Forest Management Program



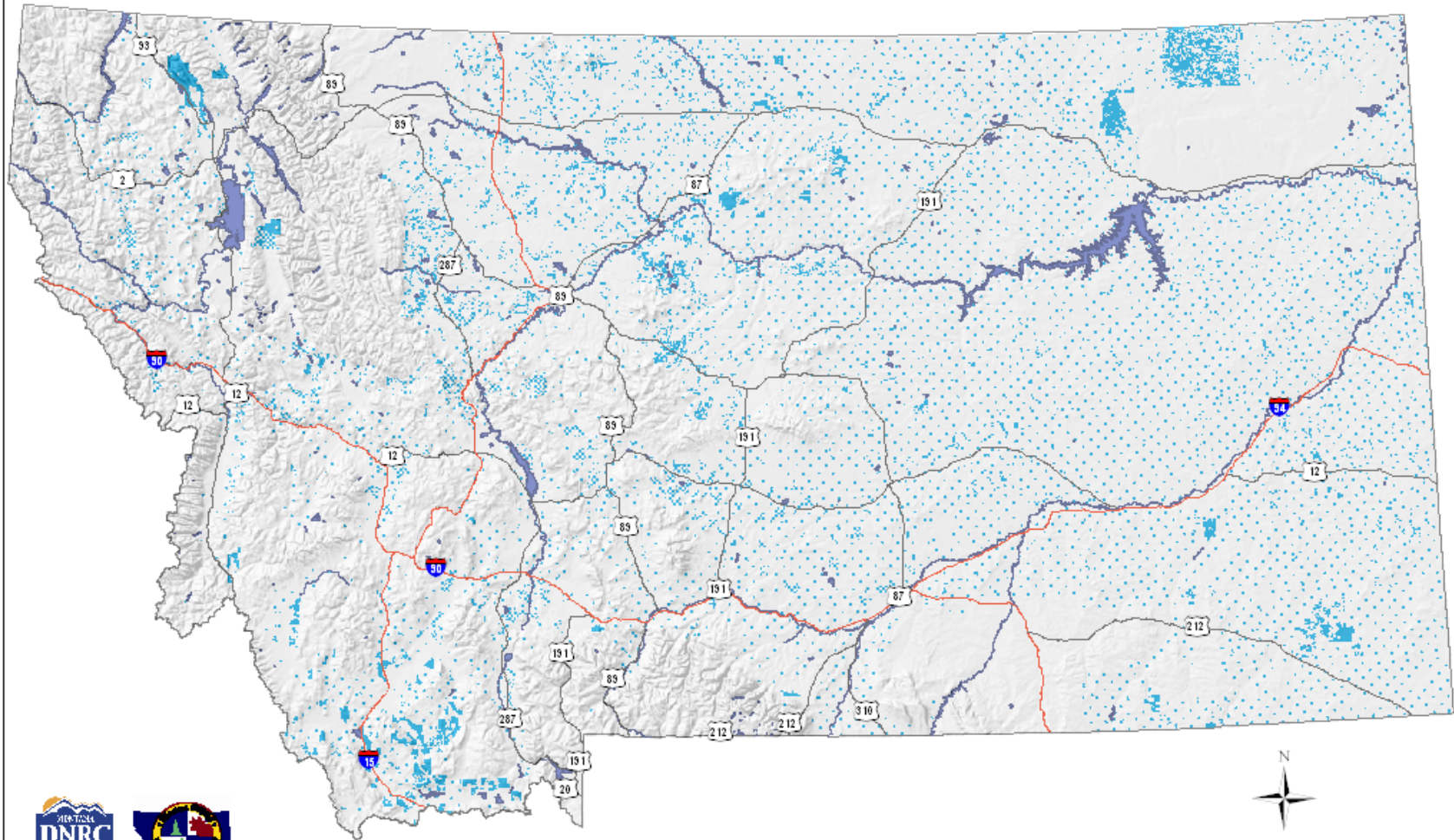
We manage 727,000 forested acres

53.2 mmbf is the annual timber harvest

(~ 51mmbf from CLO, NWLO, SWLO)



Montana State Trust Lands



— Interstate
— U.S. Route

■ Major Lakes and Rivers
■ Montana State Trust Lands

□ Montana State Boundary

0 25 50 100 Miles

NAD 1983 State Plane Montana FIPS 2500

Prepared by Montana Department of
Natural Resources and Conservation
July 2009

Habitat Conservation Plan (HCP)

What is the HCP?

- A long term plan for compliance with the Endangered Species Act (Section 10).
- Part of the application for an Incidental Take Permit.
- Explains the State's commitments for minimizing impacts to ESA-listed species while managing timber resources.



Goals and Objectives: DNRC

- Long Term ESA assurances
- Management flexibility
- Ability to handle land acquisitions and dispositions
- Clear directions for field practitioners



Goals and Objectives: USFWS

- Long-term conservation commitments for species
- Partnership with a large landholding agency
- Commitments that complement recovery efforts on federal lands
- Adaptive management



Habitat Conservation Plan (HCP)

Specifies...

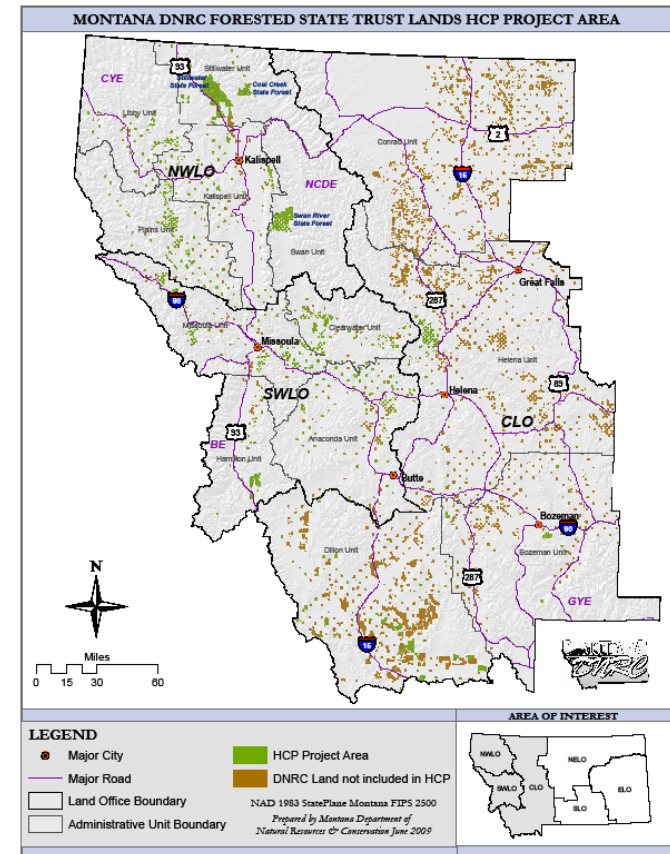
Geographic Area

Covered Species

Covered Activities

Permit Term

Conservation Strategies



Habitat Conservation Plan (HCP)

Specifies...

Geographic Area

Covered Species

Covered Activities

Permit Term

Conservation Strategies



Habitat Conservation Plan (HCP)

Specifies...

Geographic Area

Covered Species

Covered Activities

Permit Term

Conservation Strategies



Habitat Conservation Plan (HCP)

Specifies...

Geographic Area

Covered Species

Covered Activities

Permit Term

Conservation Strategies

Incidental
Take Permit

50 Years



Habitat Conservation Plan (HCP)

Specifies...

Geographic Area

Covered Species

Covered Activities

Permit Term

Conservation Strategies

Incidental
Take Permit

50 Years



Conservation Strategies

Grizzly Bears

- Transportation planning to minimize displacement and provide for seasonal habitat use and security
- Seasonal restrictions in spring habitat
- Implementing quiet zones
- Conserving den sites, avalanche chutes, riparian zones



Conservation Strategies

Canada Lynx

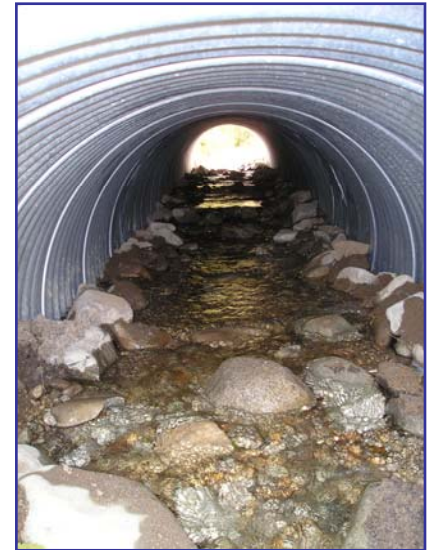
- Retain stand structures that provide for prey species
- Retain coarse woody debris for potential den sites
- Ensure adequate amounts “suitable” habitat and “foraging” habitat



Conservation Strategies

Aquatic Species

- Streamside buffers
- Fish passage protocols
- Road inventory and corrective actions
- Grazing inspections



Other HCP Sections

Changed Circumstances

**Monitoring and Adaptive
Management**

Transition Lands



Relationship of the HCP and EIS

The EIS complies with MEPA and NEPA, including public involvement

- **Public Scoping Period**
- **Public Review of Conservation Strategies**
- **Developed and Published Draft EIS/HCP**
- **Public Review of Draft EIS/HCP**

- **Project website a central tool**



Moving Forward

- **October 9: Public comment period ends**
- **Winter 2009: Respond to comments**
- **Spring 2010: Develop final EIS/HCP**
- **Summer 2010: Publish final EIS/HCP**
- **Fall 2010: Address public comments and prepare decision documents**
- **Early 2011: Publish all decision documents and issue permit**
- **2011 on – Implementation, training, and monitoring**



Questions?

